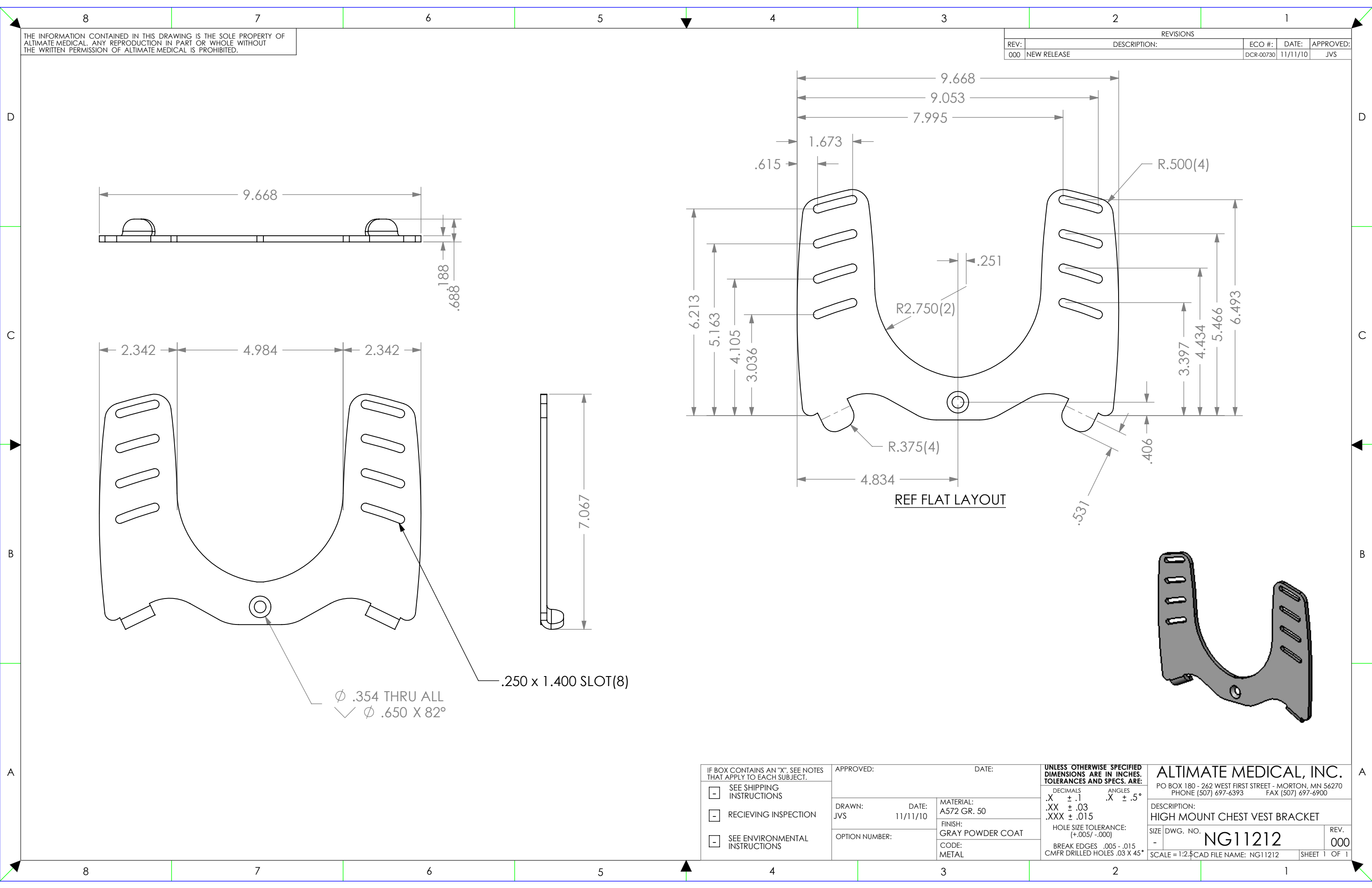


THE INFORMATION CONTAINED IN THIS DRAWING IS THE SOLE PROPERTY OF ALTIMATE MEDICAL. ANY REPRODUCTION IN PART OR WHOLE WITHOUT THE WRITTEN PERMISSION OF ALTIMATE MEDICAL IS PROHIBITED.

REVISIONS				
REV:	DESCRIPTION:	ECO #:	DATE:	APPROVED:
000	NEW RELEASE	DCR-00730	11/11/10	JVS



Ø .354 THRU ALL  
 ✓ Ø .650 X 82°

.250 x 1.400 SLOT(8)

REF FLAT LAYOUT

IF BOX CONTAINS AN "X", SEE NOTES THAT APPLY TO EACH SUBJECT. <input type="checkbox"/> SEE SHIPPING INSTRUCTIONS <input type="checkbox"/> RECEIVING INSPECTION <input type="checkbox"/> SEE ENVIRONMENTAL INSTRUCTIONS	APPROVED:	DATE:	<b>UNLESS OTHERWISE SPECIFIED DIMENSIONS ARE IN INCHES. TOLERANCES AND SPECS. ARE:</b> DECIMALS .X ± .1 .XX ± .03 .XXX ± .015 ANGLES .X ± .5° HOLE SIZE TOLERANCE: (+.005/- .000) BREAK EDGES .005 - .015 CMFR DRILLED HOLES .03 X 45°	<b>ALTIMATE MEDICAL, INC.</b> PO BOX 180 - 262 WEST FIRST STREET - MORTON, MN 56270 PHONE (507) 697-6393 FAX (507) 697-6900 DESCRIPTION: <b>HIGH MOUNT CHEST VEST BRACKET</b> SIZE DWG. NO. <b>NG11212</b> REV. <b>000</b> SCALE = 1:2.5 CAD FILE NAME: NG11212 SHEET 1 OF 1	
	DRAWN: JVS	DATE: 11/11/10			MATERIAL: A572 GR. 50
	OPTION NUMBER:	FINISH: GRAY POWDER COAT			CODE: METAL