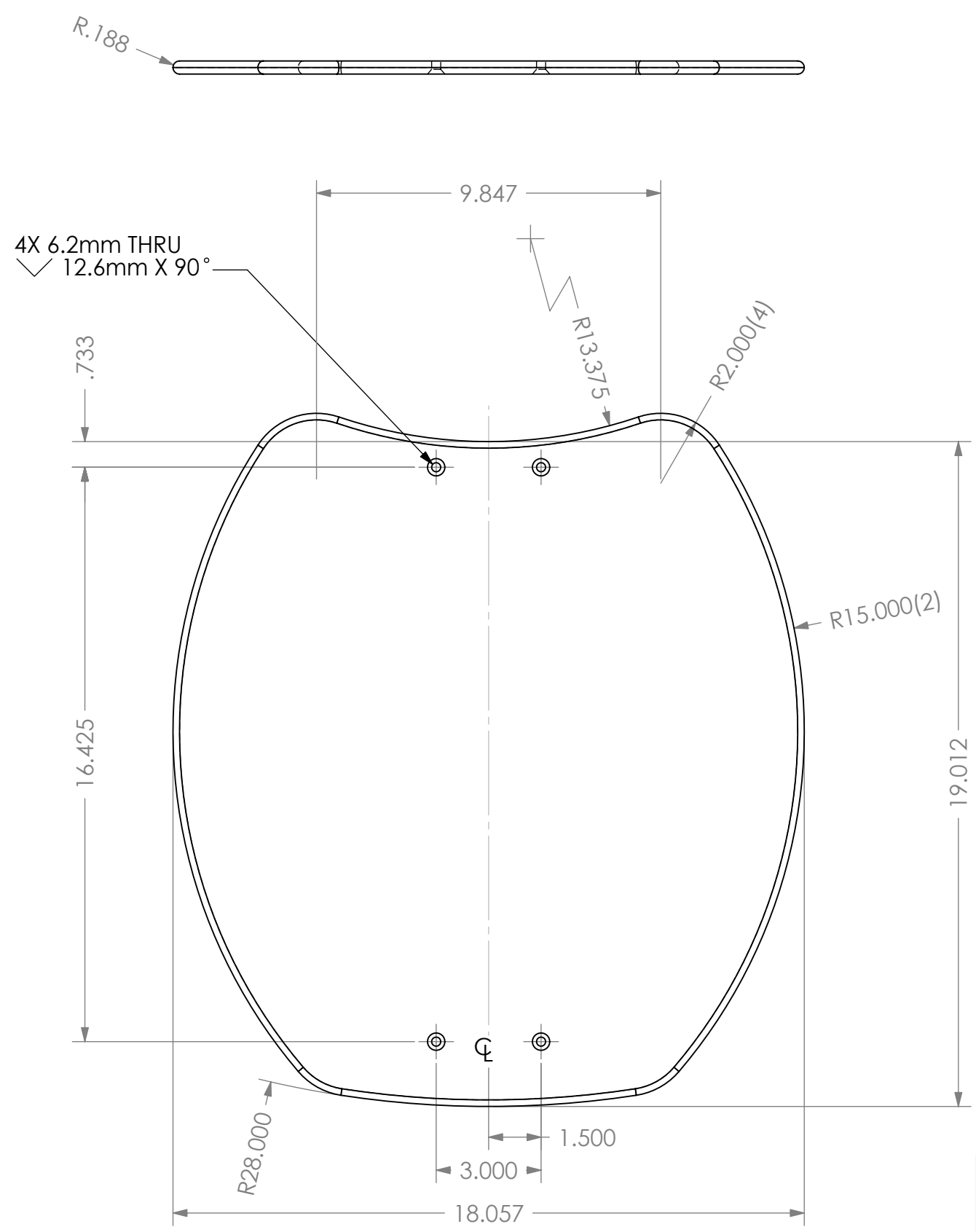


THE INFORMATION CONTAINED IN THIS DRAWING IS THE SOLE PROPERTY OF  
 ALTIMATE MEDICAL. ANY REPRODUCTION IN PART OR WHOLE WITHOUT  
 THE WRITTEN PERMISSION OF ALTIMATE MEDICAL IS PROHIBITED.

REVISIONS				
REV:	DESCRIPTION:	ECO #:	DATE:	APPROVED:
000	NEW RELEASE.	7/12/05	7/12/05	JVS



R.188

4X 6.2mm THRU  
 12.6mm X 90°

.733

16.425

9.847

R13.375

R2.000(4)

R15.000(2)

19.012

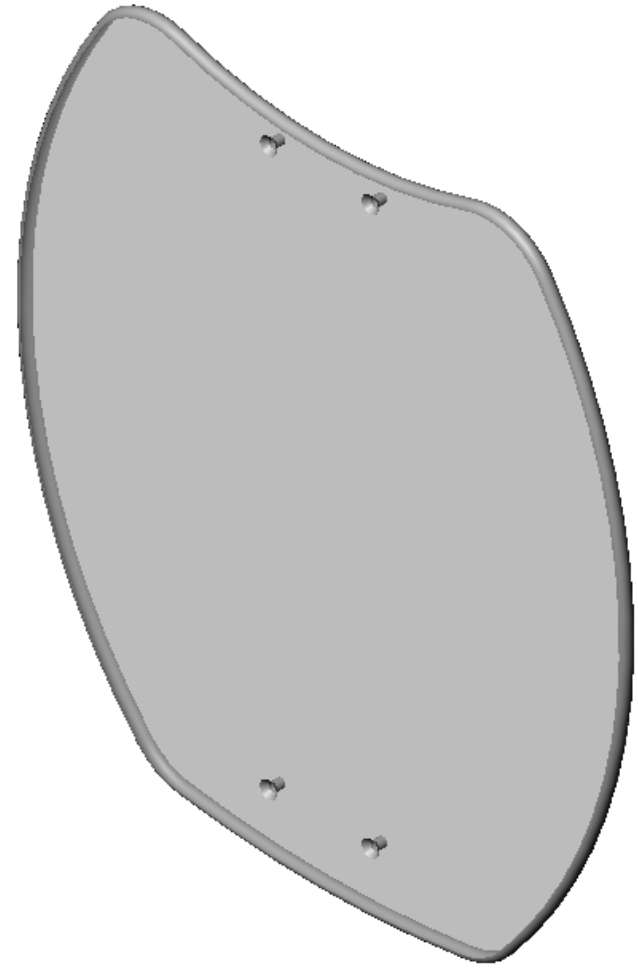
R28.000

3.000

1.500

18.057

.375



NOTE:  
 1. PART IS SYMMETRICAL ABOUT THE CENTER LINE.

IF BOX CONTAINS AN "X", SEE NOTES THAT APPLY TO EACH SUBJECT.		APPROVED:		DATE:		UNLESS OTHERWISE SPECIFIED DIMENSIONS ARE IN INCHES. TOLERANCES AND SPECS. ARE: DECIMALS      ANGLES .X ± .1          .X ± .5° .XX ± .03 .XXX ± .015 HOLE SIZE TOLERANCE: (+.005/-.000) BREAK EDGES .005 - .015 CMFR DRILLED HOLES .03 X 45°		<b>ALTIMATE MEDICAL, INC.</b> PO BOX 180 - 262 WEST FIRST STREET - MORTON, MN 56270 PHONE (507) 697-6393      FAX (507) 697-6900 DESCRIPTION: <b>TABLE MOBILE</b>	
<input type="checkbox"/> SEE SHIPPING INSTRUCTIONS	<input type="checkbox"/> RECEIVING INSPECTION	DRAWN: JVS	DATE: 9/29/2006	MATERIAL: CLEAR/ACRYLIC	FINISH: -				
<input type="checkbox"/> SEE ENVIRONMENTAL INSTRUCTIONS						SCALE = 1:4		CAD FILE NAME: NG20092 SHEET 1 OF 1	