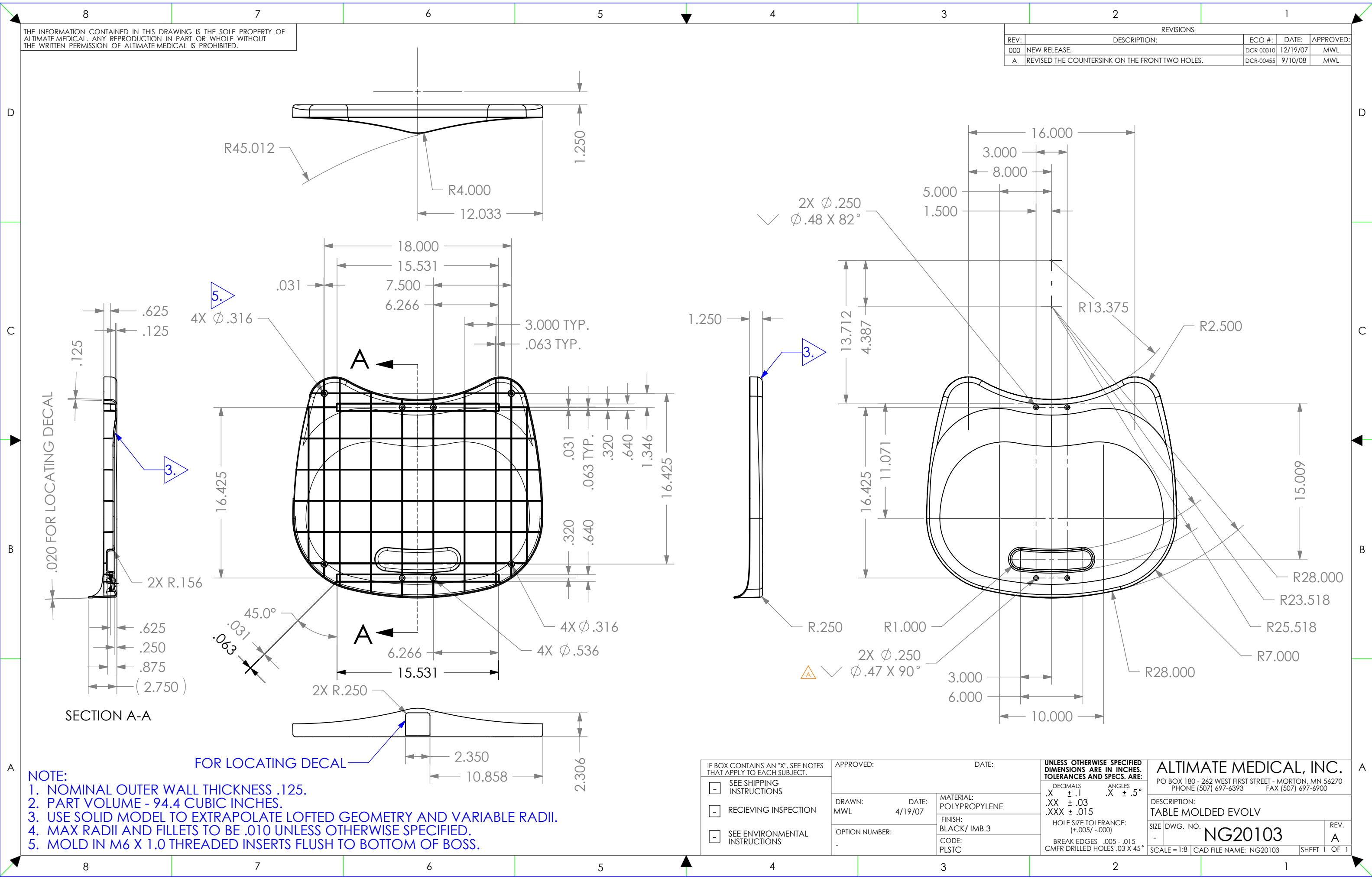


THE INFORMATION CONTAINED IN THIS DRAWING IS THE SOLE PROPERTY OF ALTIMATE MEDICAL. ANY REPRODUCTION IN PART OR WHOLE WITHOUT THE WRITTEN PERMISSION OF ALTIMATE MEDICAL IS PROHIBITED.

REVISIONS				
REV:	DESCRIPTION:	ECO #:	DATE:	APPROVED:
000	NEW RELEASE.	DCR-00310	12/19/07	MWL
A	REVISED THE COUNTERSINK ON THE FRONT TWO HOLES.	DCR-00455	9/10/08	MWL



NOTE:

1. NOMINAL OUTER WALL THICKNESS .125.
2. PART VOLUME - 94.4 CUBIC INCHES.
3. USE SOLID MODEL TO EXTRAPOLATE LOFTED GEOMETRY AND VARIABLE RADII.
4. MAX RADII AND FILLETS TO BE .010 UNLESS OTHERWISE SPECIFIED.
5. MOLD IN M6 X 1.0 THREADED INSERTS FLUSH TO BOTTOM OF BOSS.

IF BOX CONTAINS AN "X", SEE NOTES THAT APPLY TO EACH SUBJECT.		APPROVED:	DATE:	UNLESS OTHERWISE SPECIFIED DIMENSIONS ARE IN INCHES. TOLERANCES AND SPECS. ARE: DECIMALS .X \pm .1 .XX \pm .03 .XXX \pm .015 HOLE SIZE TOLERANCE: (+.005/- .000) BREAK EDGES .005 - .015 CMFR DRILLED HOLES .03 X 45°	ALTIMATE MEDICAL, INC. PO BOX 180 - 262 WEST FIRST STREET - MORTON, MN 56270 PHONE (507) 697-6393 FAX (507) 697-6900 DESCRIPTION: TABLE MOLDED EVOLV SIZE DWG. NO. NG20103 SCALE = 1:8 CAD FILE NAME: NG20103 SHEET 1 OF 1	
<input type="checkbox"/> SEE SHIPPING INSTRUCTIONS	<input type="checkbox"/> RECEIVING INSPECTION	DRAWN: MWL	DATE: 4/19/07			MATERIAL: POLYPROPYLENE
<input type="checkbox"/> SEE ENVIRONMENTAL INSTRUCTIONS		OPTION NUMBER: -				FINISH: BLACK/ IMB 3
						CODE: PLSTC