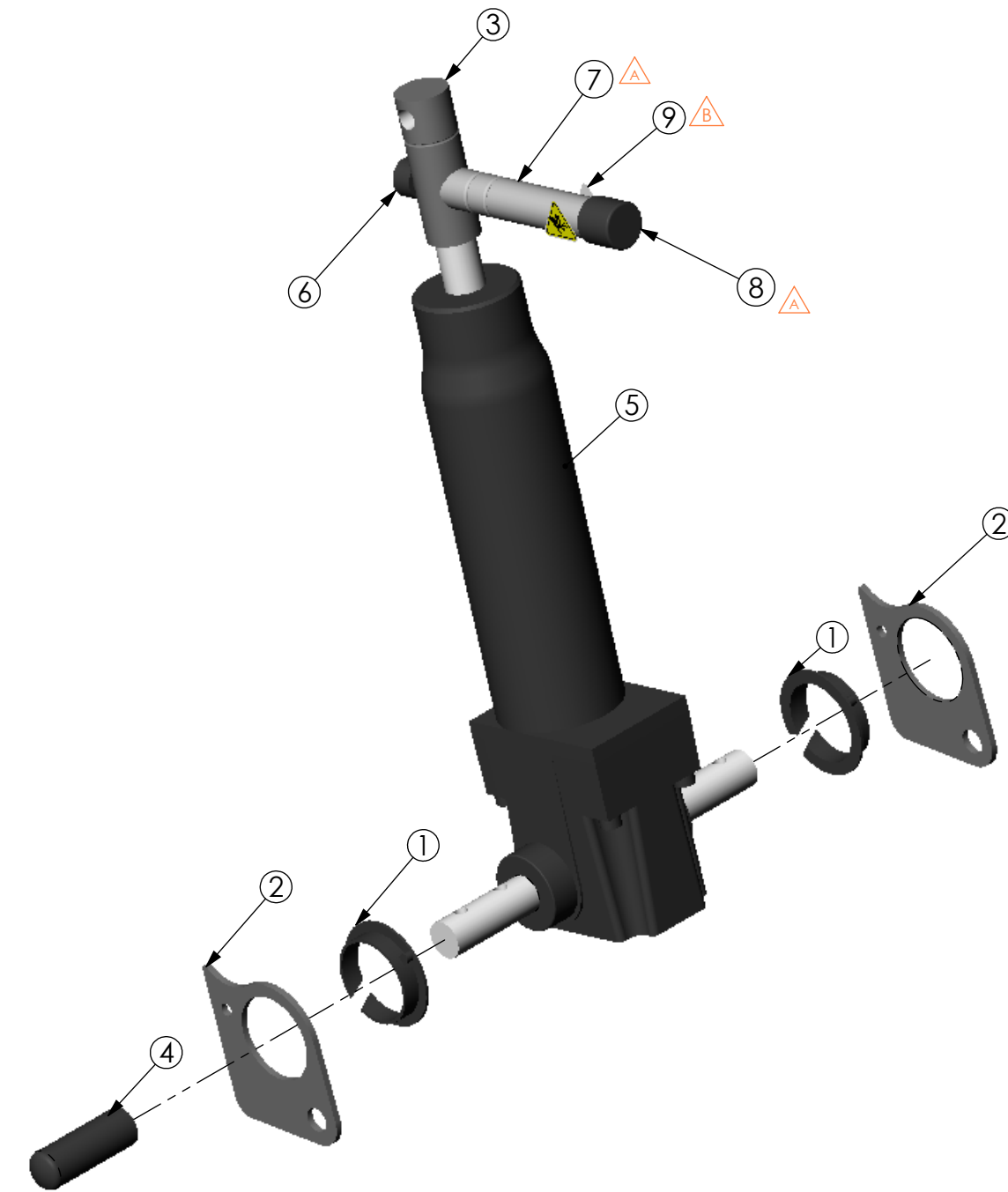


THE INFORMATION CONTAINED IN THIS DRAWING IS THE SOLE PROPERTY OF  
 ALTIMATE MEDICAL. ANY REPRODUCTION IN PART OR WHOLE WITHOUT  
 THE WRITTEN PERMISSION OF ALTIMATE MEDICAL IS PROHIBITED.

REVISIONS				
REV:	DESCRIPTION:	ECO #:	DATE:	APPROVED:
000	NEW RELEASE.	05-ECO-001	7/12/05	JVS
A	REPLACED 600011 WITH NG11227 OR 11228 AND 600481	DCR-00766	2/17/11	TJF
B	SWITCHED #80890 WITH Y4001, NEW PINCH STICKER	DCR-00919	4/25/12	JVS



ITEM NO.	PART NO.	REV	WO HANDLE/QTY.	NAME
1	10767	00	2	NYLINER BUSHING
2	NG10088	000	2	PLATE MOUNT HYDRAULIC
3	600072	B	1	EXTENSION PUMP LARGE
4	92702	00	1	PUMP SHAFT CAP
5	10090	00	1	HYD CYL POWER PACKER MODEL
6	600073	000	1	SHCS M12X1.75-40
7	NG11227	000	1	FOLLOWING ARM STOP ADULT
8	600481	000	1	FOLLOWING ARM STOP CAP
9	Y4001	000	2	LABEL HAND CRUSH

IF BOX CONTAINS AN "X", SEE NOTES THAT APPLY TO EACH SUBJECT. <input type="checkbox"/> SEE SHIPPING INSTRUCTIONS <input type="checkbox"/> RECEIVING INSPECTION <input type="checkbox"/> SEE ENVIRONMENTAL INSTRUCTIONS	APPROVED:	DATE:	<b>UNLESS OTHERWISE SPECIFIED DIMENSIONS ARE IN INCHES. TOLERANCES AND SPECS. ARE:</b> DECIMALS: .X ± .1 .XX ± .03 .XXX ± .015 ANGLES: .X ± .5° HOLE SIZE TOLERANCE: (+.005/- .000) BREAK EDGES .005 - .015 CMFR DRILLED HOLES .03 X 45°	<b>ALTIMATE MEDICAL, INC.</b> PO BOX 180 - 262 WEST FIRST STREET - MORTON, MN 56270 PHONE (507) 697-6393 FAX (507) 697-6900 DESCRIPTION: <b>PUMP HYDRAULIC ASSEMBLY LARGE</b> SIZE DWG. NO. <b>NG50009</b> REV. <b>B</b> SCALE = 1:3 CAD FILE NAME: NG50009 SHEET 1 OF 1	
	DRAWN: JVS	DATE: 4/6/2005			MATERIAL:
					FINISH: -