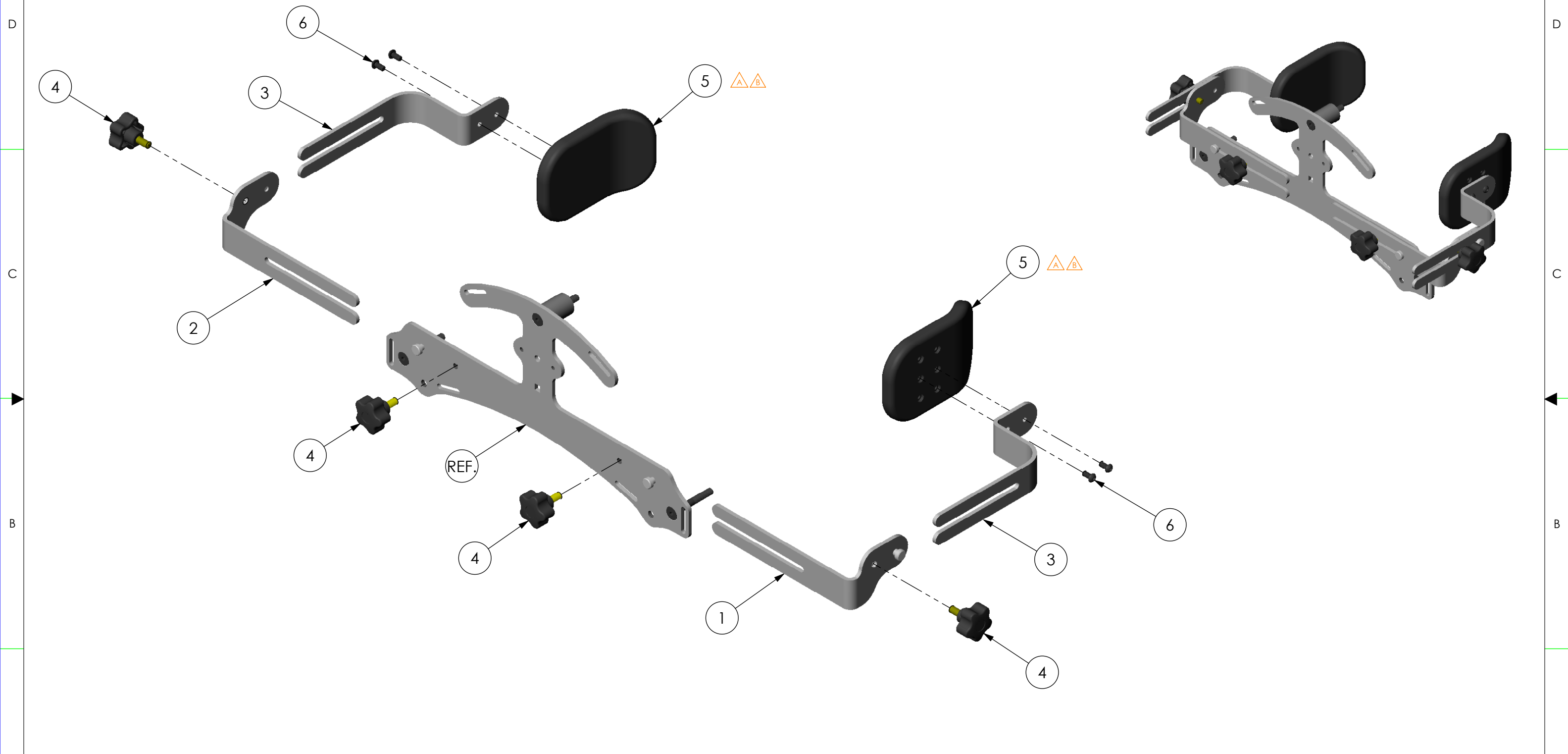


THE INFORMATION CONTAINED IN THIS DRAWING IS THE SOLE PROPERTY OF  
 ALTIMATE MEDICAL. ANY REPRODUCTION IN PART OR WHOLE WITHOUT  
 THE WRITTEN PERMISSION OF ALTIMATE MEDICAL IS PROHIBITED.

REVISIONS				
REV:	DESCRIPTION:	ECO #:	DATE:	APPROVED:
000	NEW RELEASE.	06-ECO-018	4/20/06	GJR
A	REVISED NG30127 TO A MOLDED PART	DCR-00270	9/26/07	JVS
B	REVISED NG30127 TO REVISION B. NO PHYSICAL CHANGE TO PART.	DCR-00376	4/3/08	MWL



ITEM NO.	PART NO.	REV	QTY.	NAME
1	NG10449	000	1	BRACKET LAT REAR WLDMT RH
2	NG10450	000	1	BRACKET LATS REAR WLDMT LH
3	NG10479	B	2	BRACKET LAT FRONT LG
4	600131	000	4	KNOB M8 X 25mm 5 POINT MALE
5	NG30127	B	2	PAD SUPPORT EVOLV CONTOURED
6	600340	000	4	BOLT BTN SHCS M6 X 1.0 - 12

IF BOX CONTAINS AN "X", SEE NOTES THAT APPLY TO EACH SUBJECT. <input type="checkbox"/> SEE SHIPPING INSTRUCTIONS <input type="checkbox"/> RECEIVING INSPECTION <input type="checkbox"/> SEE ENVIRONMENTAL INSTRUCTIONS	APPROVED:	DATE:	<b>UNLESS OTHERWISE SPECIFIED DIMENSIONS ARE IN INCHES. TOLERANCES AND SPECS. ARE:</b> DECIMALS      ANGLES .X ± .1          .X ± .5° .XX ± .03 .XXX ± .015 HOLE SIZE TOLERANCE: (+.005/-.000) BREAK EDGES .005 - .015 CMFR DRILLED HOLES .03 X 45°	<b>ALTIMATE MEDICAL, INC.</b> PO BOX 180 - 262 WEST FIRST STREET - MORTON, MN 56270 PHONE (507) 697-6393      FAX (507) 697-6900		
	DRAWN: MWL	DATE: 1/24/06		MATERIAL:	DESCRIPTION: <b>LATERAL SUPPORT ASSEMBLY</b>	
	OPTION NUMBER: V934			FINISH: -	CODE: ASMBLY SIZE DWG. NO. <b>NG50176</b> REV. <b>B</b> SCALE = 1:4      CAD FILE NAME: NG50176      SHEET 1 OF 1	