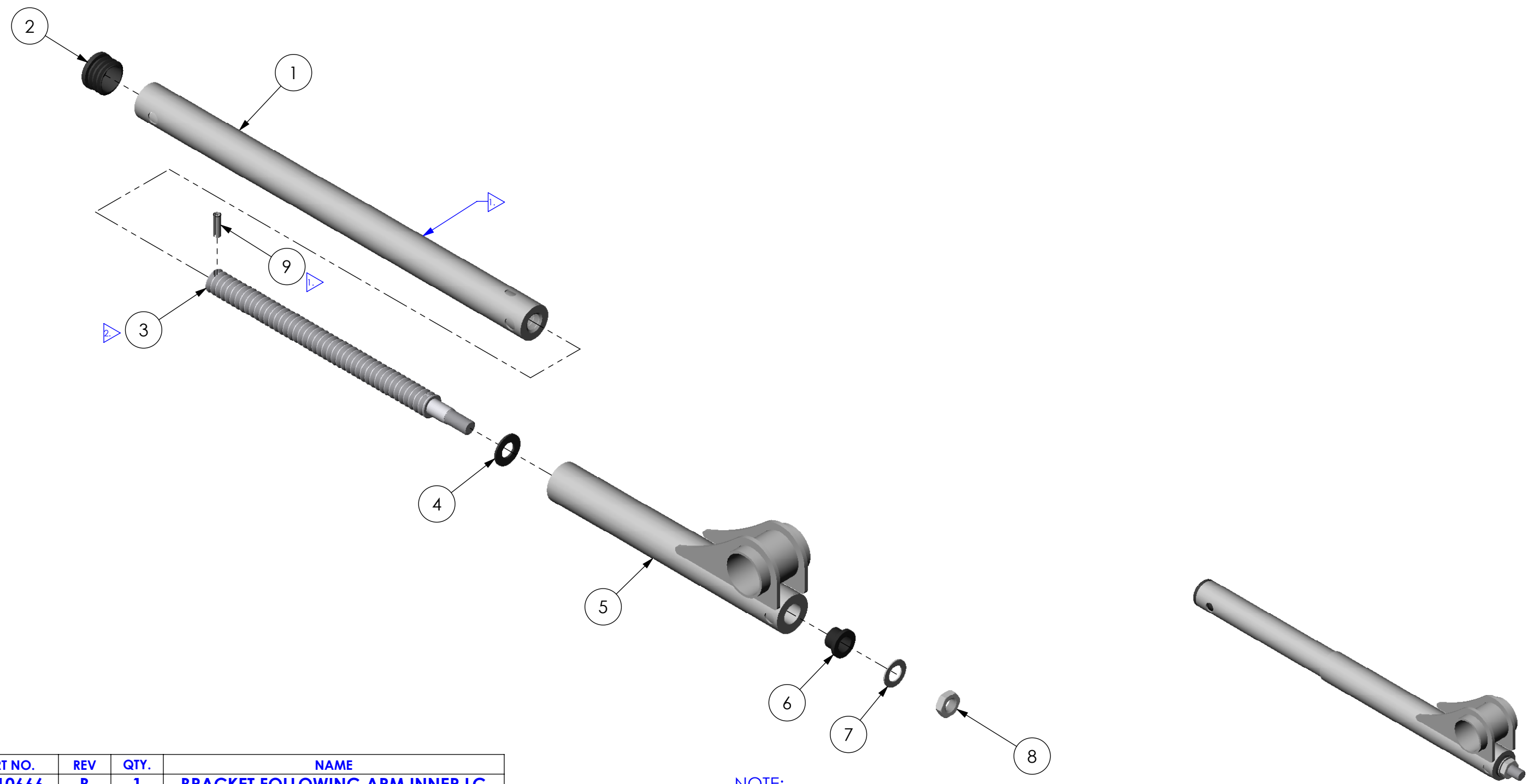


THE INFORMATION CONTAINED IN THIS DRAWING IS THE SOLE PROPERTY OF  
 ALTIMATE MEDICAL. ANY REPRODUCTION IN PART OR WHOLE WITHOUT  
 THE WRITTEN PERMISSION OF ALTIMATE MEDICAL IS PROHIBITED.

REVISIONS				
REV:	DESCRIPTION:	ECO #:	DATE:	APPROVED:
000	NEW RELEASE.	DCR-00459	10/27/08	MWL



ITEM NO.	PART NO.	REV	QTY.	NAME
1	NG10666	B	1	BRACKET FOLLOWING ARM INNER LG
2	600217	000	1	CAP END RND 1.125 OD
3	600004	B	1	SHAFT ADJ. FOLLOWING ARM
4	80283	-	1	FLAT WASHER
5	NG10410	A	1	BRACKET REAR FOLLOWING ARM
6	81256	000	1	WASHER-SHOULDER, NYLON
7	91602	-	1	BUSHING (SHIM)
8	600059	000	1	NUT JAM M12 X 1.75
9	600411	000	1	PIN SPRING 5mm X 20mm

**NOTE:**  
 1. INSTALL PIN THROUGH ACCESS HOLE.  
 2. APPLY ANTI-SEIZE LUBRICANT (600189) TO THREADS PRIOR TO ASSEMBLY. CHECK EXP. DATE.

IF BOX CONTAINS AN "X", SEE NOTES THAT APPLY TO EACH SUBJECT.		APPROVED:	DATE:	<b>UNLESS OTHERWISE SPECIFIED DIMENSIONS ARE IN INCHES. TOLERANCES AND SPECS. ARE:</b> DECIMALS: .X ± .1 .XX ± .03 .XXX ± .015 HOLE SIZE TOLERANCE: (+.005/-.000) BREAK EDGES .005 - .015 CMFR DRILLED HOLES .03 X 45°	<b>ALTIMATE MEDICAL, INC.</b> PO BOX 180 - 262 WEST FIRST STREET - MORTON, MN 56270 PHONE (507) 697-6393 FAX (507) 697-6900 DESCRIPTION: ASMBLY FOLLOWING ARM ADULT SIZE DWG. NO. <b>NG50437</b> REV. 000 SCALE = 1:3 CAD FILE NAME: NG50437 SHEET 1 OF 1
<input type="checkbox"/> SEE SHIPPING INSTRUCTIONS	DRAWN: MWL	DATE: 9/25/08	MATERIAL:		
<input type="checkbox"/> RECEIVING INSPECTION	EXPIRATION DATE:		FINISH:		
<input type="checkbox"/> SEE ENVIRONMENTAL INSTRUCTIONS			CODE: ASMBLY		