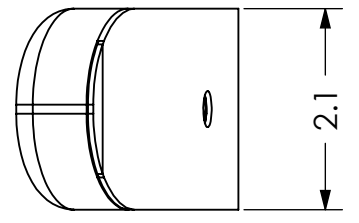
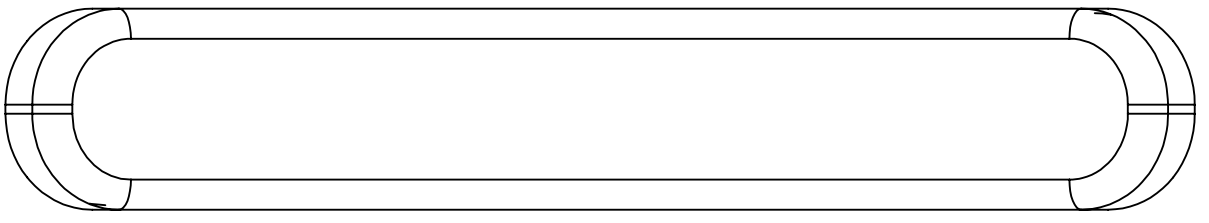
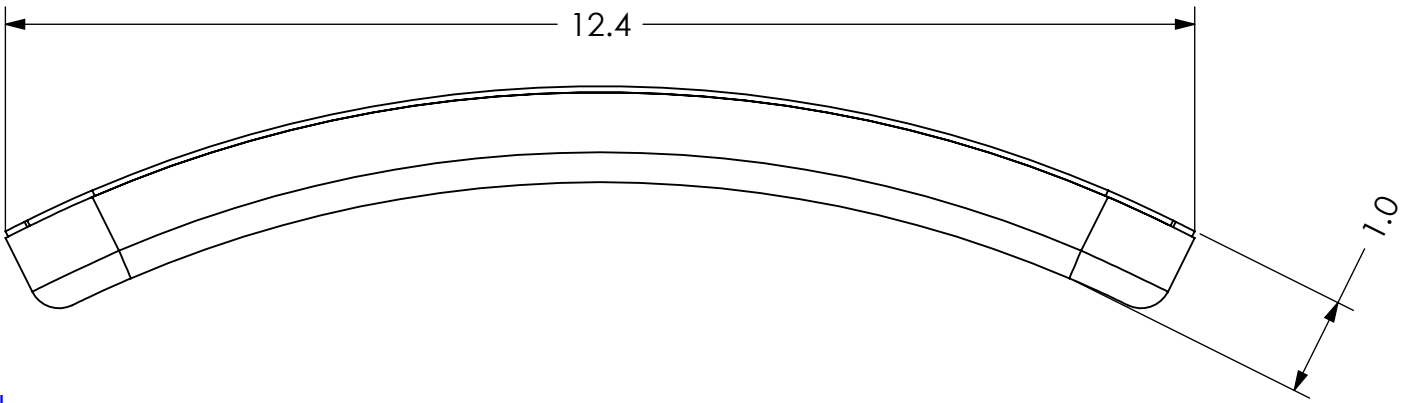
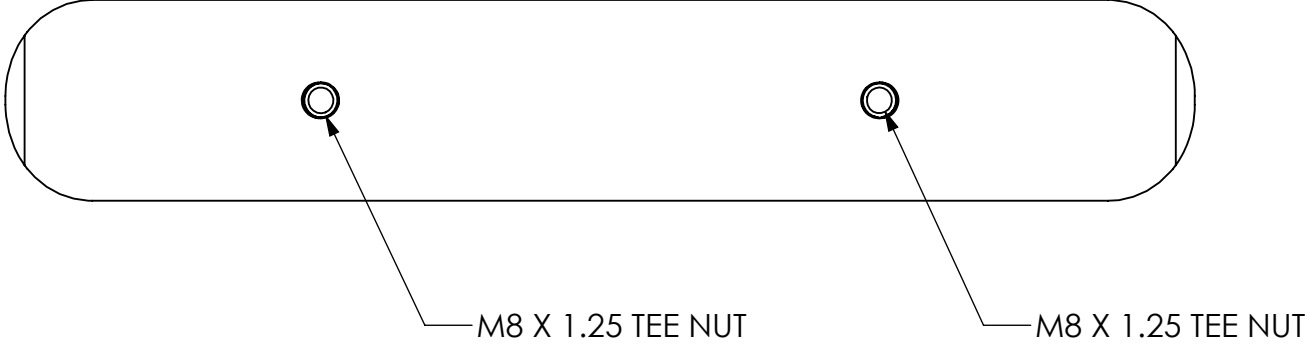


THE INFORMATION CONTAINED IN THIS DRAWING IS THE SOLE PROPERTY OF ALTIMATE MEDICAL. ANY REPRODUCTION IN PART OR WHOLE WITHOUT THE WRITTEN PERMISSION OF ALTIMATE MEDICAL IS PROHIBITED.

REVISIONS				
REV:	DESCRIPTION:	ECO #:	DATE:	APPROVED:
000	NEW RELEASE.	DCR-00589	8/27/09	MWL



- NOTES:**
1. USE PLASTIC INSERT T20043.
 2. ADHERE 1/2" THICK FOAM TO PLASTIC INSERT.
 3. COVER IS BLACK DARTEX, TEK STRETCH OR EQUIVALENT MATERIAL.
 4. COVER BACK SIDE WITH BLACK FELT.

- GENERAL MATERIAL PROPERTIES:**
- FOAM PROPERTIES:**
- CLOSED CELL URETHANE FOAM.
 - DENSITY: 1.8 - 2
 - INDENT FORCE DEFLECTION (25% IFD): 30 - 38.
 - TENSILE STRENGTH: 10psi MIN.
 - TEAR RESISTANCE: 1 ppi MIN.
 - ELONGATION: 100% MIN.
 - COMPRESSIVE SET @ 50% COMPRESSION: 10% MAX.
 - FLAME RESISTANCE TO MEET CAL 117.

- EXTERIOR COVERING PROPERTIES:**
1. MATERIAL: DARTEX P091, P191 AND P291 (C, S & P) TYPES OR EQUIVALENT.
 2. DESCRIPTION: POLYURETHANE TRANSFER COATING ON WEFT KNITTED FABRIC.
 3. MATT GLOSS LEVEL.
 4. COATING PROTECTED AGAINST FUNGI AND BACTERIA.
 5. WASHABLE.
 6. DRY CLEANABLE.
 7. HF WELDABLE.
 8. FLAMABILITY: BS 7175 IGNITION SOURCES 0, 1 & 5: CONFORMS TO CALIFORNIA 117 SECTION E: COMPLIES (NON-IGNITION).

IF BOX CONTAINS AN "X", SEE NOTES THAT APPLY TO EACH SUBJECT. <input type="checkbox"/> SEE SHIPPING INSTRUCTIONS <input type="checkbox"/> RECEIVING INSPECTION <input type="checkbox"/> SEE ENVIRONMENTAL INSTRUCTIONS	APPROVED:	DATE:	UNLESS OTHERWISE SPECIFIED DIMENSIONS ARE IN INCHES. TOLERANCES AND SPECS. ARE: DECIMALS: .X ± .1 .XX ± .03 .XXX ± .015 ANGLES: .X ± .5° HOLE SIZE TOLERANCE: (+.005/- .000) BREAK EDGES: .005 - .015 CMFR DRILLED HOLES: .03 X 45°	ALTIMATE MEDICAL, INC. PO BOX 180 - 262 WEST FIRST STREET - MORTON, MN 56270 PHONE (507) 697-6393 FAX (507) 697-6900 DESCRIPTION: PAD FRONT BANTAM	
	DRAWN: JVS	DATE: 6/16/09			MATERIAL:
	EXPIRATION DATE: -	FINISH: -			CODE: UPSTRY
SIZE DWG. NO. T30046 REV. 000 SCALE = 1:2 CAD FILE NAME: T30046 SHEET 1 OF 1					