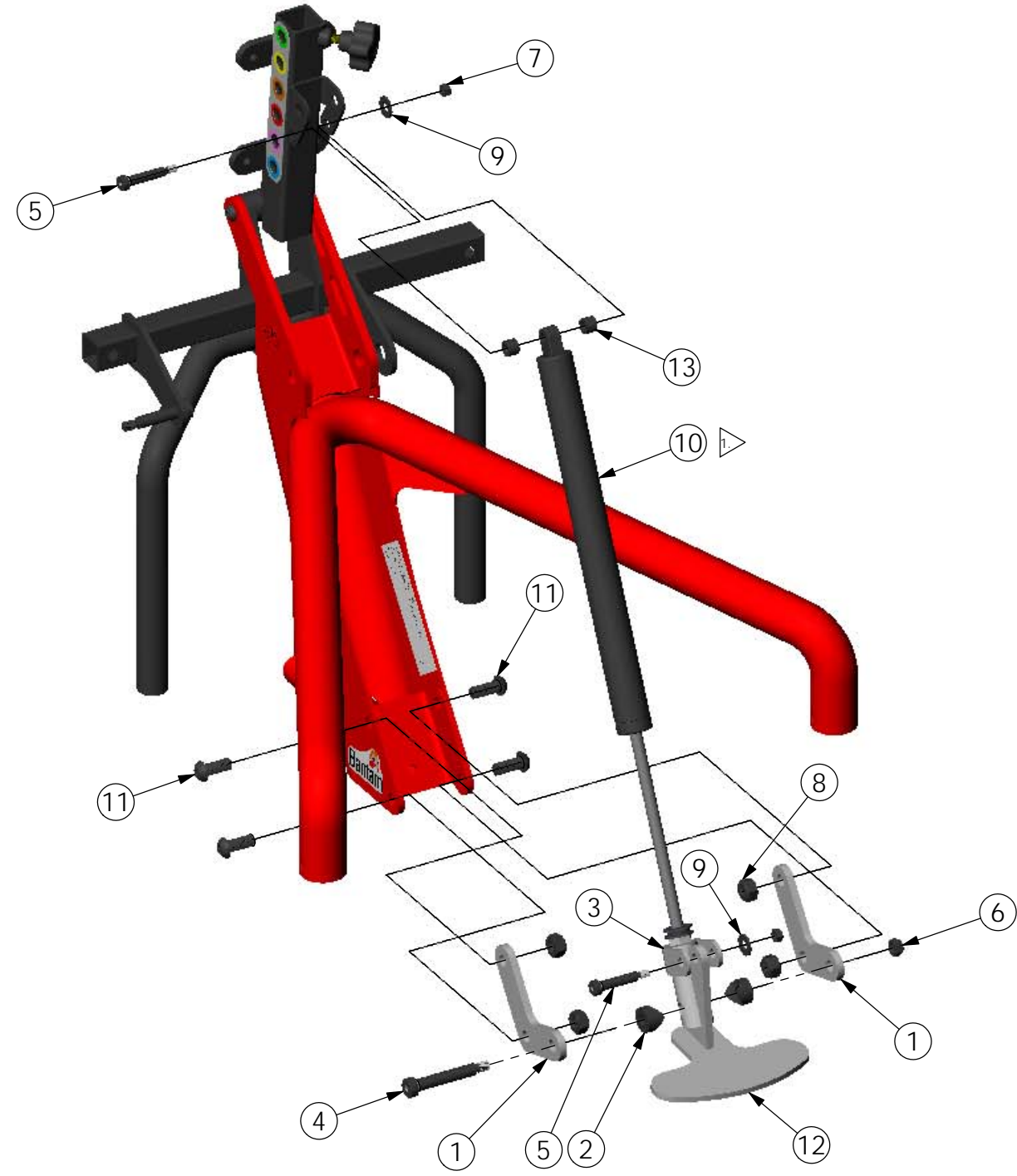


THE INFORMATION CONTAINED IN THIS DRAWING IS THE SOLE PROPERTY OF ALTIMATE MEDICAL. ANY REPRODUCTION IN PART OR WHOLE WITHOUT THE WRITTEN PERMISSION OF ALTIMATE MEDICAL IS PROHIBITED.

REVISIONS				
REV:	DESCRIPTION:	ECO #:	DATE:	APPROVED:
000	NEW RELEASE.	DCR-00460	10/17/08	MWL



ITEM NO.	PART NO.	REV	QTY.	NAME
1	T10091	000	2	BRACKET MOUNT GAS SPRING
2	53010	A	2	COVED WASHER
3	T10092	000	1	BRACKET ACTUATOR GAS SPRING
4	600384	000	1	BOLT SHOULDER M10 X 55
5	600365	000	2	BOLT SHOULDER M8 X 35
6	600009	000	1	NUT M8 X 1.25 NYLON LOCK
7	600008	000	2	NUT M6 X 1.0 NYLON LOCK
8	600010	000	4	NUT M10 X 1.5 NYLON LOCK
9	600159	000	2	WASHER NYLON M8
10	600324	000	1	SPRING GAS 350mm STROKE 350N
11	600223	000	4	BOLT M10 X 1.5 - 20 BTN SHCS
12	T10095	000	1	PEDAL ACTUATOR GAS SPRING
13	NG20123	000	2	SPACER .51OD X .31ID X .35L

NOTE:
1. GAS SPRING 600324 SHOULD HAVE TWO STEEL WASHERS, ONE RUBBER BUMPER AND JAM NUT.

IF BOX CONTAINS AN "X", SEE NOTES THAT APPLY TO EACH SUBJECT. <input type="checkbox"/> SEE SHIPPING INSTRUCTIONS <input type="checkbox"/> RECEIVING INSPECTION <input type="checkbox"/> SEE ENVIRONMENTAL INSTRUCTIONS	APPROVED:	DATE:	UNLESS OTHERWISE SPECIFIED DIMENSIONS ARE IN INCHES. TOLERANCES AND SPECS. ARE: DECIMALS: .X ± .1, .XX ± .03, .XXX ± .015 ANGLES: .X ± .5° HOLE SIZE TOLERANCE: (+.005/- .000) BREAK EDGES: .005 - .015 CMFR DRILLED HOLES: .03 X 45°	ALTIMATE MEDICAL, INC. PO BOX 180 - 262 WEST FIRST STREET - MORTON, MN 56270 PHONE (507) 697-6393 FAX (507) 697-6900 DESCRIPTION: ASMBLY GAS SPRING PEDIATRIC	
	DRAWN: MWL	DATE: 2/11/08			MATERIAL:
	EXPIRATION DATE:				FINISH:
					CODE: ASMBLY
SCALE = 1:5		CAD FILE NAME: T50018	REV. 000	SHEET 1 OF 1	