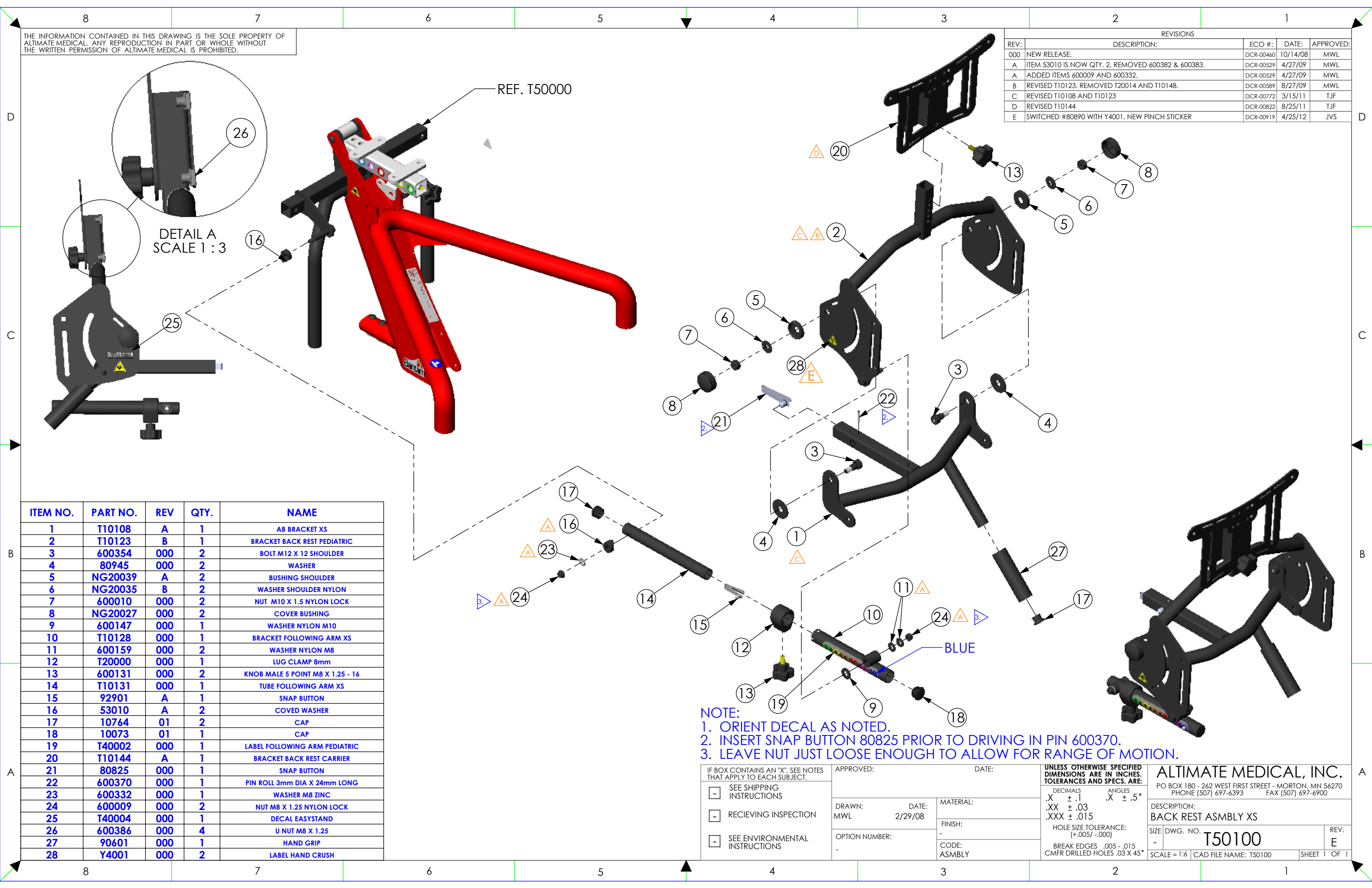


THE INFORMATION CONTAINED IN THIS DRAWING IS THE SOLE PROPERTY OF ALTIMATE MEDICAL. ANY REPRODUCTION IN PART OR WHOLE WITHOUT THE WRITTEN PERMISSION OF ALTIMATE MEDICAL IS PROHIBITED.

REVISIONS				
REV:	DESCRIPTION:	ECO #:	DATE:	APPROVED:
000	NEW RELEASE.	DCR-00460	10/14/08	MWL
A	ITEM 53010 IS NOW QTY. 2, REMOVED 600382 & 600383.	DCR-00529	4/27/09	MWL
A	ADDED ITEMS 600009 AND 600332.	DCR-00529	4/27/09	MWL
B	REVISED T10123. REMOVED T20014 AND T10148.	DCR-00589	8/27/09	MWL
C	REVISED T10108 AND T10123	DCR-00772	3/15/11	TJF
D	REVISED T10144	DCR-00822	8/25/11	TJF
E	SWITCHED #80890 WITH Y4001, NEW PINCH STICKER	DCR-00919	4/25/12	JVS



ITEM NO.	PART NO.	REV	QTY.	NAME
1	T10108	A	1	AB BRACKET XS
2	T10123	B	1	BRACKET BACK REST PEDIATRIC
3	600354	000	2	BOLT M12 X 12 SHOULDER
4	80945	000	2	WASHER
5	NG20039	A	2	BUSHING SHOULDER
6	NG20035	B	2	WASHER SHOULDER NYLON
7	600010	000	2	NUT M10 X 1.5 NYLON LOCK
8	NG20027	000	2	COVER BUSHING
9	600147	000	1	WASHER NYLON M10
10	T10128	000	1	BRACKET FOLLOWING ARM XS
11	600159	000	2	WASHER NYLON M8
12	T20000	000	1	LUG CLAMP 8mm
13	600131	000	2	KNOB MALE 5 POINT M8 X 1.25 - 16
14	T10131	000	1	TUBE FOLLOWING ARM XS
15	92901	A	1	SNAP BUTTON
16	53010	A	2	COVED WASHER
17	10764	01	2	CAP
18	10073	01	1	CAP
19	T40002	000	1	LABEL FOLLOWING ARM PEDIATRIC
20	T10144	A	1	BRACKET BACK REST CARRIER
21	80825	000	1	SNAP BUTTON
22	600370	000	1	PIN ROLL 3mm DIA X 24mm LONG
23	600332	000	1	WASHER M8 ZINC
24	600009	000	2	NUT M8 X 1.25 NYLON LOCK
25	T40004	000	1	DECAL EASYSTAND
26	600386	000	4	U NUT M8 X 1.25
27	90601	000	1	HAND GRIP
28	Y4001	000	2	LABEL HAND CRUSH

NOTE:
 1. ORIENT DECAL AS NOTED.
 2. INSERT SNAP BUTTON 80825 PRIOR TO DRIVING IN PIN 600370.
 3. LEAVE NUT JUST LOOSE ENOUGH TO ALLOW FOR RANGE OF MOTION.

IF BOX CONTAINS AN "X", SEE NOTES THAT APPLY TO EACH SUBJECT.	APPROVED:	DATE:	UNLESS OTHERWISE SPECIFIED DIMENSIONS ARE IN INCHES. TOLERANCES AND SPECS. ARE: DECIMALS .X ± .1 ANGLES .X ± .5° .XX ± .03 .XXX ± .015 HOLE SIZE TOLERANCE: (+.005/-.000) BREAK EDGES .005 - .015 CMFR DRILLED HOLES .03 X 45°	ALTIMATE MEDICAL, INC. PO BOX 180 - 262 WEST FIRST STREET - MORTON, MN 56270 PHONE (507) 697-6393 FAX (507) 697-6900 DESCRIPTION: BACK REST ASMBLY XS SIZE DWG. NO. T50100 REV. E SCALE = 1:6 CAD FILE NAME: T50100 SHEET 1 OF 1
<input type="checkbox"/> SEE SHIPPING INSTRUCTIONS	DRAWN: MWL	DATE: 2/29/08		
<input type="checkbox"/> RECEIVING INSPECTION	MATERIAL:	FINISH:		
<input type="checkbox"/> SEE ENVIRONMENTAL INSTRUCTIONS	OPTION NUMBER:	CODE: ASMBLY		