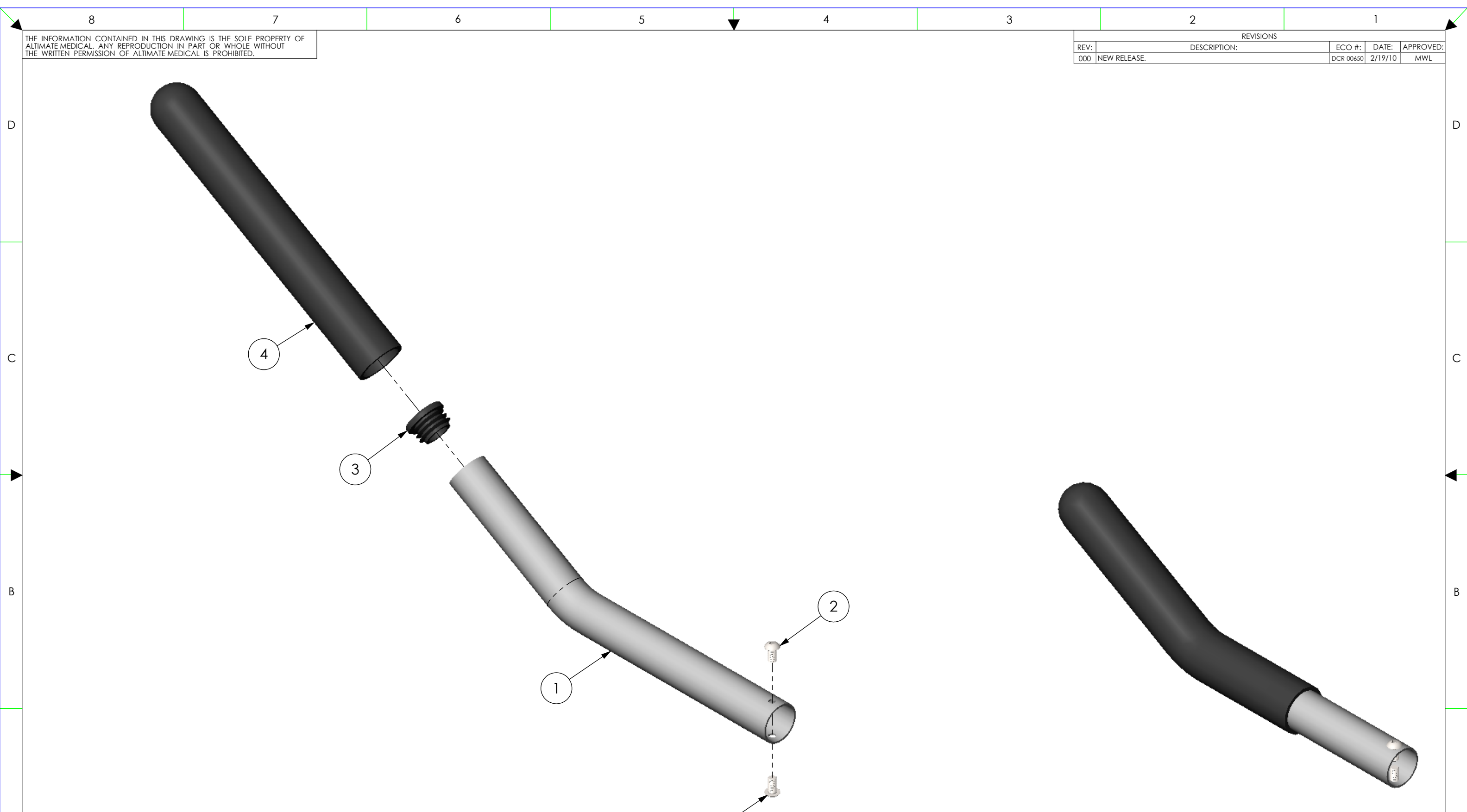


THE INFORMATION CONTAINED IN THIS DRAWING IS THE SOLE PROPERTY OF  
 ALTIMATE MEDICAL. ANY REPRODUCTION IN PART OR WHOLE WITHOUT  
 THE WRITTEN PERMISSION OF ALTIMATE MEDICAL IS PROHIBITED.

REVISIONS				
REV:	DESCRIPTION:	ECO #:	DATE:	APPROVED:
000	NEW RELEASE.	DCR-00650	2/19/10	MWL



ITEM NO.	PART NO.	REV	QTY.	NAME
1	T10286	000	1	HANDLE ASSIST EXTENSION
2	600454	000	2	BOLT M5 X .8 - 10 BTN SHCS
3	10073	-	1	CAP
4	600061	A	1	GRIP DIPPED FOAM 1.00 ID

IF BOX CONTAINS AN "X", SEE NOTES THAT APPLY TO EACH SUBJECT.		APPROVED:	DATE:	<b>UNLESS OTHERWISE SPECIFIED DIMENSIONS ARE IN INCHES. TOLERANCES AND SPECS. ARE:</b> DECIMALS: .X ± .1, .XX ± .03, .XXX ± .015 ANGLES: .X ± .5° HOLE SIZE TOLERANCE: (+.005/- .000) BREAK EDGES: .005 - .015 CMFR DRILLED HOLES: .03 X 45°	<b>ALTIMATE MEDICAL, INC.</b> PO BOX 180 - 262 WEST FIRST STREET - MORTON, MN 56270 PHONE (507) 697-6393 FAX (507) 697-6900 DESCRIPTION: <b>ASMBLY ASSIST HANDLE</b> SIZE DWG. NO. <b>T50140</b> REV. <b>000</b> SCALE = 1:2 CAD FILE NAME: T50140 SHEET 1 OF 1
<input type="checkbox"/> SEE SHIPPING INSTRUCTIONS	DRAWN: MWL	DATE: 2/19/10	MATERIAL:		
<input type="checkbox"/> RECEIVING INSPECTION	EXPIRATION DATE: -	FINISH: -			
<input type="checkbox"/> SEE ENVIRONMENTAL INSTRUCTIONS	CODE: ASMBLY				