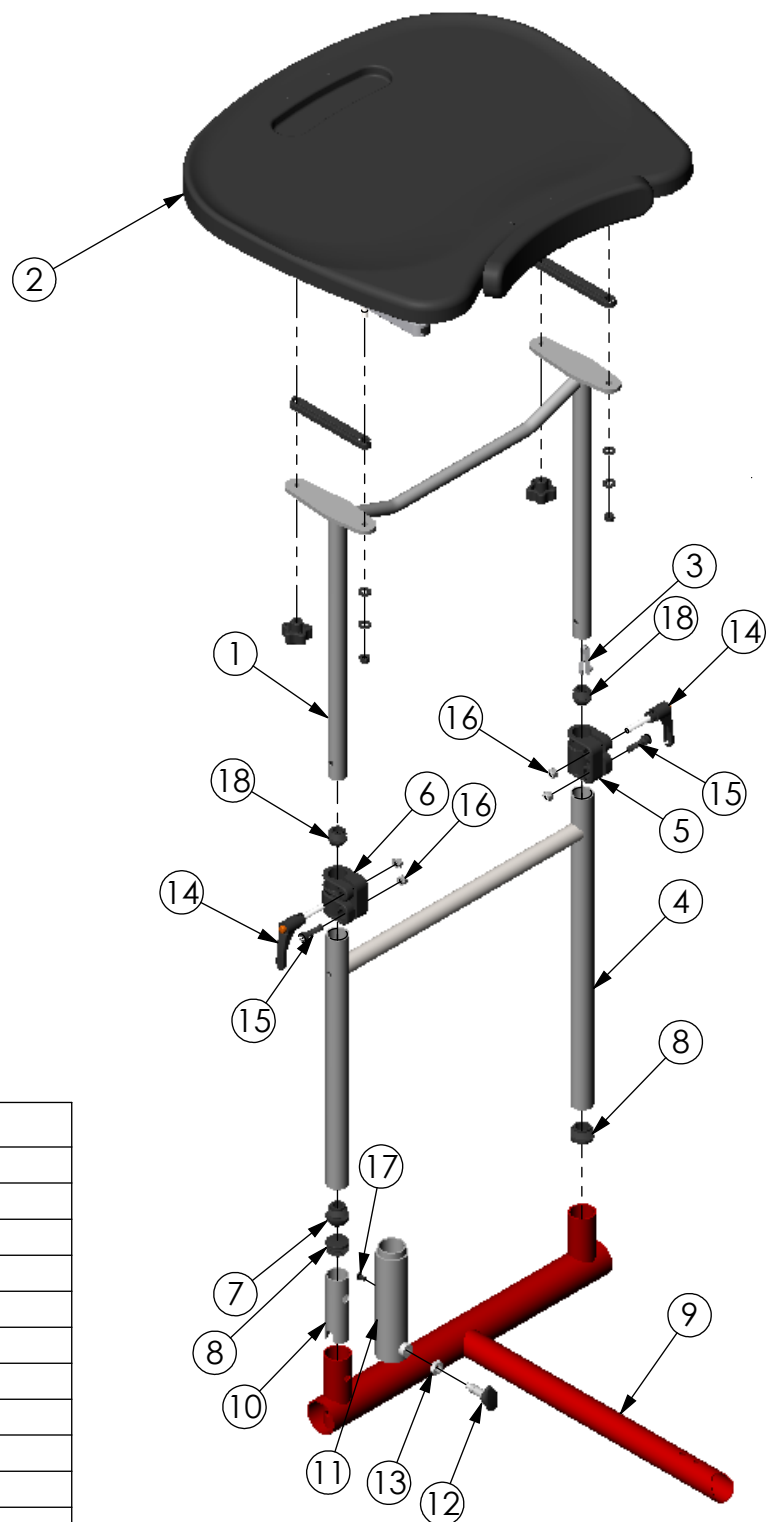


THE INFORMATION CONTAINED IN THIS DRAWING IS THE SOLE PROPERTY OF  
 ALTIMATE MEDICAL. ANY REPRODUCTION IN PART OR WHOLE WITHOUT  
 THE WRITTEN PERMISSION OF ALTIMATE MEDICAL IS PROHIBITED.

REVISIONS				
REV:	DESCRIPTION:	ECO #:	DATE:	APPROVED:
000	NEW RELEASE	DCR-00748	12/16/10	TJF



ITEM NO.	PART NO.	REV	Default /QTY.	NAME
1	T10300	000	1	TABLE SUPPORT
2	T50172	000	1	TRAY ASMBLY BLK XTEND MOTION
3	92901	A	1	SNAP BUTTON
4	T10291	000	1	H-FRAME BANTAM
5	NG20121	000	1	CLAMP VERTICAL EVOLV RH
6	NG20120	000	1	CLAMP VERTICAL EVOLV LH
7	600082	000	1	BALL CAP 1.25D 14-23 GA
8	NG20105	000	2	CAP
9	T10288	000	1	FRAME FRONT H-FRAME PED
10	T10350	000	1	TUBE SWING AWAY SUPPORT
11	T10351	000	1	TUBE ASSEMBLY SWING AWAY
12	600422	000	1	PLUNGER INDEXED 8mm
13	600059	000	1	NUT JAM M12 X 1.75
14	600156	000	2	CLAMP LEVER 8mm X 40mm
15	600139	000	2	BOLT SHCS M8 X 1.25-30
16	600009	000	4	NUT LOCK M8 X 1.25
17	600037	000	1	BOLT BTNHD M6 X 1.0-10
18	92703	000	2	BALL CAP

NOTE: CASTER OPTIONS  
 T50168 - STANDARD CASTER  
 T50170 - SWIVEL CASTER

IF BOX CONTAINS AN "X", SEE NOTES THAT APPLY TO EACH SUBJECT. <input type="checkbox"/> SEE SHIPPING INSTRUCTIONS <input type="checkbox"/> RECEIVING INSPECTION <input type="checkbox"/> SEE ENVIRONMENTAL INSTRUCTIONS	APPROVED:	DATE:	<b>UNLESS OTHERWISE SPECIFIED DIMENSIONS ARE IN INCHES. TOLERANCES AND SPECS. ARE:</b> DECIMALS      ANGLES .X ± .1          .X ± .5° .XX ± .03 .XXX ± .015 HOLE SIZE TOLERANCE: (+.005/-.000) BREAK EDGES .005 - .015 CMFR DRILLED HOLES .03 X 45°	<b>ALTIMATE MEDICAL, INC.</b> PO BOX 180 - 262 WEST FIRST STREET - MORTON, MN 56270 PHONE (507) 697-6393      FAX (507) 697-6900	
	DRAWN: TJF	DATE: 12/1/10		MATERIAL:	DESCRIPTION: H-FRAME BANTAM BLK MOLDED TRAY
	EXPIRATION DATE:	-		FINISH:	-
		CODE: ASMBLY	SIZE DWG. NO. <b>T50148</b> REV. 000 SCALE = 1:10 CAD FILE NAME: T50148 SHEET 1 OF 1		