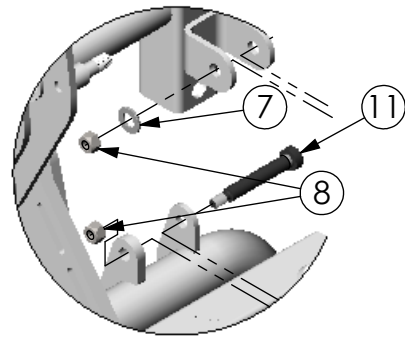
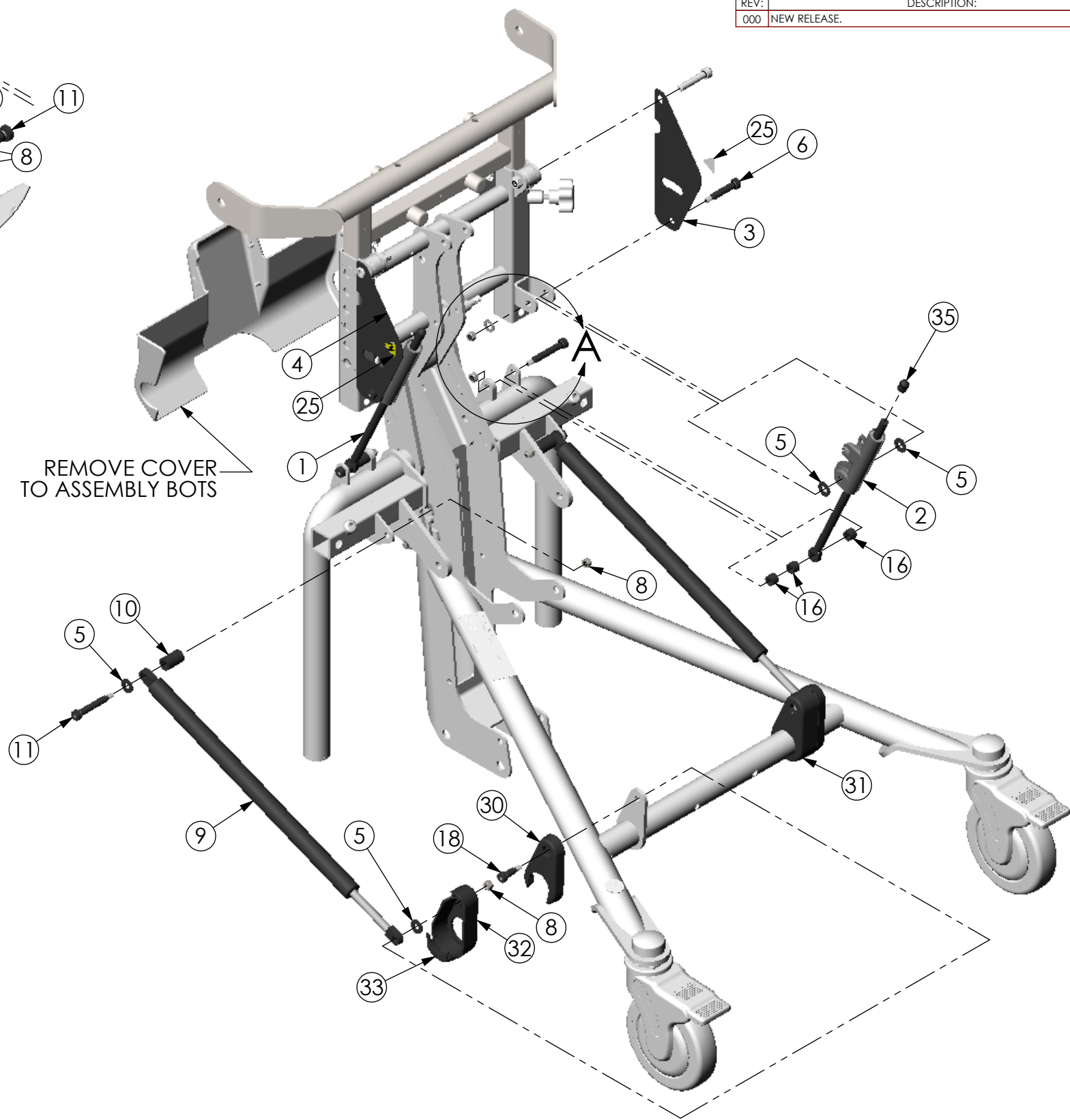


THE INFORMATION CONTAINED IN THIS DRAWING IS THE SOLE PROPERTY OF  
 ALTIMATE MEDICAL. ANY REPRODUCTION IN PART OR WHOLE WITHOUT  
 THE WRITTEN PERMISSION OF ALTIMATE MEDICAL IS PROHIBITED.

REVISIONS				
REV:	DESCRIPTION:	ECO #:	DATE:	APPROVED:
000	NEW RELEASE.	DCR-01002	11/19/12	MWL



DETAIL A  
 SCALE 1 : 4

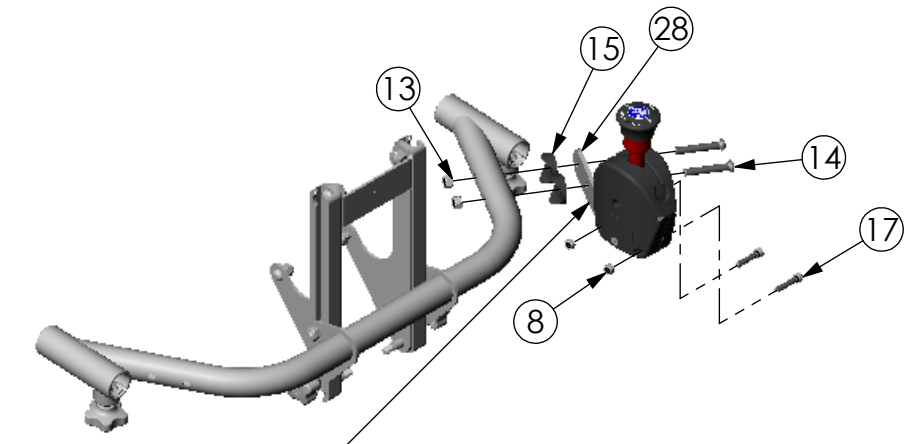
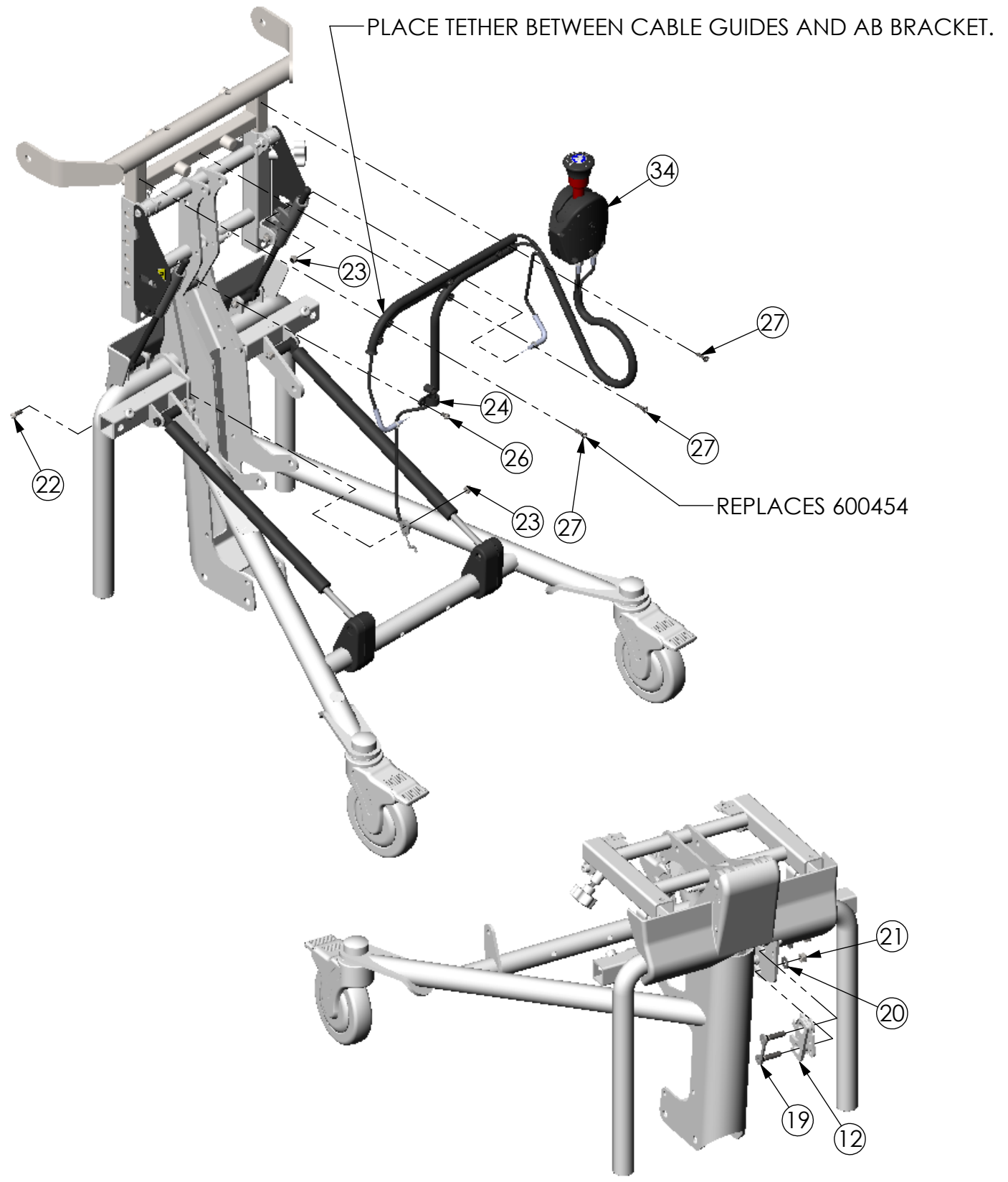


ITEM NO.	PART NO.	REV	QTY.	NAME
1	600514	000	1	MECHANICAL LOCK LH
2	600515	000	1	MECHANICAL LOCK RH
3	Y2033	000	1	GUARD MECH LOCK RH
4	Y2034	000	1	GUARD MECH LOCK LH
5	600159	000	8	WASHER NYLON M8
6	600365	-	2	BOLT SHOULDER M8 X 35
7	600332	000	2	WASHER M8 ZINC
8	600008		10	NUT NYLOCK M6 X 1.0
9	600490	000	2	HYDRAULIC DAMPER 300mm STROKE
10	Y2013	000	2	BUSHING DAMPER
11	600263	000	4	BOLT SHOULDER M8 X 45
12	600534	000	1	STRIKER LATCH
13	600009		2	NUT NYLOCK M8 X 1.25
14	600060		2	BOLT BTN SHCS M8 X 1.25 - 50
15	Y2039	000	2	COVED WASHER 1.25 DIA THIN
16	NG20123	000	6	SPACER .51OD X .31ID X .35L
17	600522		2	BOLT SHCS M6 X 1.0 - 30
18	600586	000	2	BOLT SHOULDER M8 X 16
19	Y1105	000	1	BOLT UP BRACKET
20	600160	000	2	WASHER 1/4" USS ZINC
21	600009		2	NUT NYLOCK M8 X 1.25
22	600197		1	BOLT BTN SHCS M6 X 1.0 - 16
23	600008		3	NUT NYLOCK M6 X 1.0
24	600572	000	1	CLAMP CABLE .625" ID
25	Y4001	000	2	LABEL HAND CRUSH
26	600454		1	BOLT BTN SHCS M5 X 0.8 - 10
27	600545		3	BOLT FLT HD M5 X .8 - 20
28	Y1113	000	1	MOUNT LEVER ACTUATOR W/ TABLE
29	Y1114	000	1	BRACKET MOUNT LEVER ACTUATOR
30	Y2042	000	2	COVER END GAS SPRING
31	Y2043	000	1	COVER GAS SPRING RH
32	Y2044	000	1	COVER GAS SPRING LH
33	Y2045	000	2	COVER GAS SPRING BOTTOM
34	Y5553	000	1	ASMBLY CABLE
35	600593	000	2	CAP END MECH LOCK

IF BOX CONTAINS AN "X", SEE NOTES THAT APPLY TO EACH SUBJECT. <input type="checkbox"/> SEE SHIPPING INSTRUCTIONS <input type="checkbox"/> RECEIVING INSPECTION <input type="checkbox"/> SEE ENVIRONMENTAL INSTRUCTIONS	APPROVED:	DATE:	UNLESS OTHERWISE SPECIFIED DIMENSIONS ARE IN INCHES. TOLERANCES AND SPECS. ARE: DECIMALS .X ± .1 .XX ± .03 .XXX ± .015 HOLE SIZE TOLERANCE: (+.005/-.000) BREAK EDGES .005 - .015 CMFR DRILLED HOLES .03 X 45°	<b>ALTIMATE MEDICAL, INC.</b> PO BOX 180 - 262 WEST FIRST STREET - MORTON, MN 56270 PHONE (507) 697-6393 FAX (507) 697-6900 DESCRIPTION: ASMBLY SUPINE OPTION BANTAM MED SIZE DWG. NO. <b>Y5554</b> REV. <b>000</b> SCALE = 1:6 CAD FILE NAME: Y5554 SHEET 1 OF 2	
	DRAWN: MWL	DATE: 11/14/11			MATERIAL:
	EXPIRATION DATE:				FINISH:
					CODE: ASMBLY

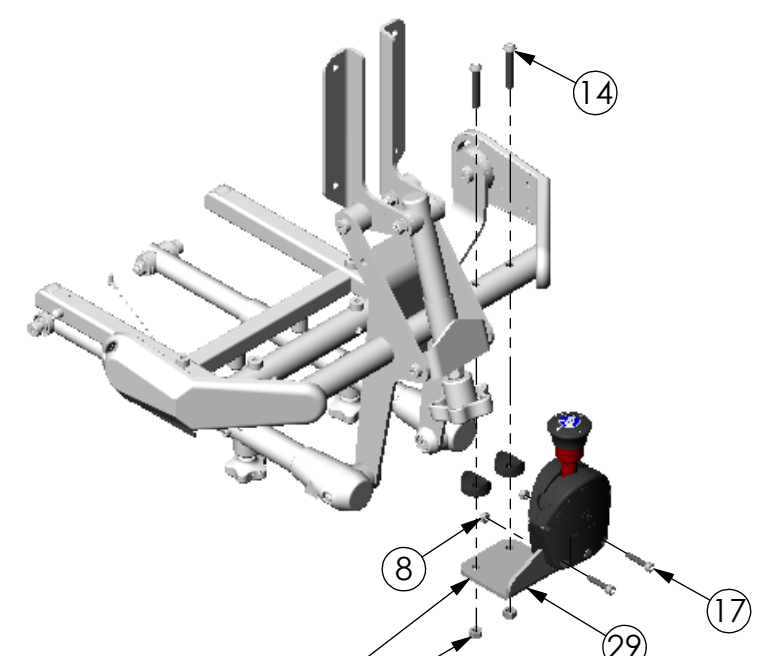
THE INFORMATION CONTAINED IN THIS DRAWING IS THE SOLE PROPERTY OF  
 ALTIMATE MEDICAL. ANY REPRODUCTION IN PART OR WHOLE WITHOUT  
 THE WRITTEN PERMISSION OF ALTIMATE MEDICAL IS PROHIBITED.

SEE PAGE 1 FOR REVISION HISTORY



DO NOT PULL THIS PART  
 WITH A NO-TABLE OPTION

CABLE ACTUATOR MOUNTED WITH TABLE OPTION



DO NOT PULL  
 THIS PART WITH  
 A TABLE OPTION

CABLE ACTUATOR MOUNTED WITH NO-TABLE OPTION

IF BOX CONTAINS AN "X", SEE NOTES THAT APPLY TO EACH SUBJECT. <input type="checkbox"/> SEE SHIPPING INSTRUCTIONS <input type="checkbox"/> RECEIVING INSPECTION <input type="checkbox"/> SEE ENVIRONMENTAL INSTRUCTIONS	APPROVED:	DATE:	UNLESS OTHERWISE SPECIFIED DIMENSIONS ARE IN INCHES. TOLERANCES AND SPECS. ARE: DECIMALS .X ± .1 .XX ± .03 .XXX ± .015 ANGLES .X ± .5° HOLE SIZE TOLERANCE: (+.005/-.000) BREAK EDGES .005-.015 CMFR DRILLED HOLES .03 X 45°	<b>ALTIMATE MEDICAL, INC.</b> PO BOX 180 - 262 WEST FIRST STREET - MORTON, MN 56270 PHONE (507) 697-6393 FAX (507) 697-6900 DESCRIPTION: ASMBLY SUPINE OPTION BANTAM MED SIZE DWG. NO. <b>Y5554</b> REV. <b>000</b> SCALE = 1:8 CAD FILE NAME: Y5554 SHEET 2 OF 2	
	DRAWN: MWL	DATE: 11/14/11			MATERIAL:
	EXPIRATION DATE:				FINISH:
					CODE: ASMBLY