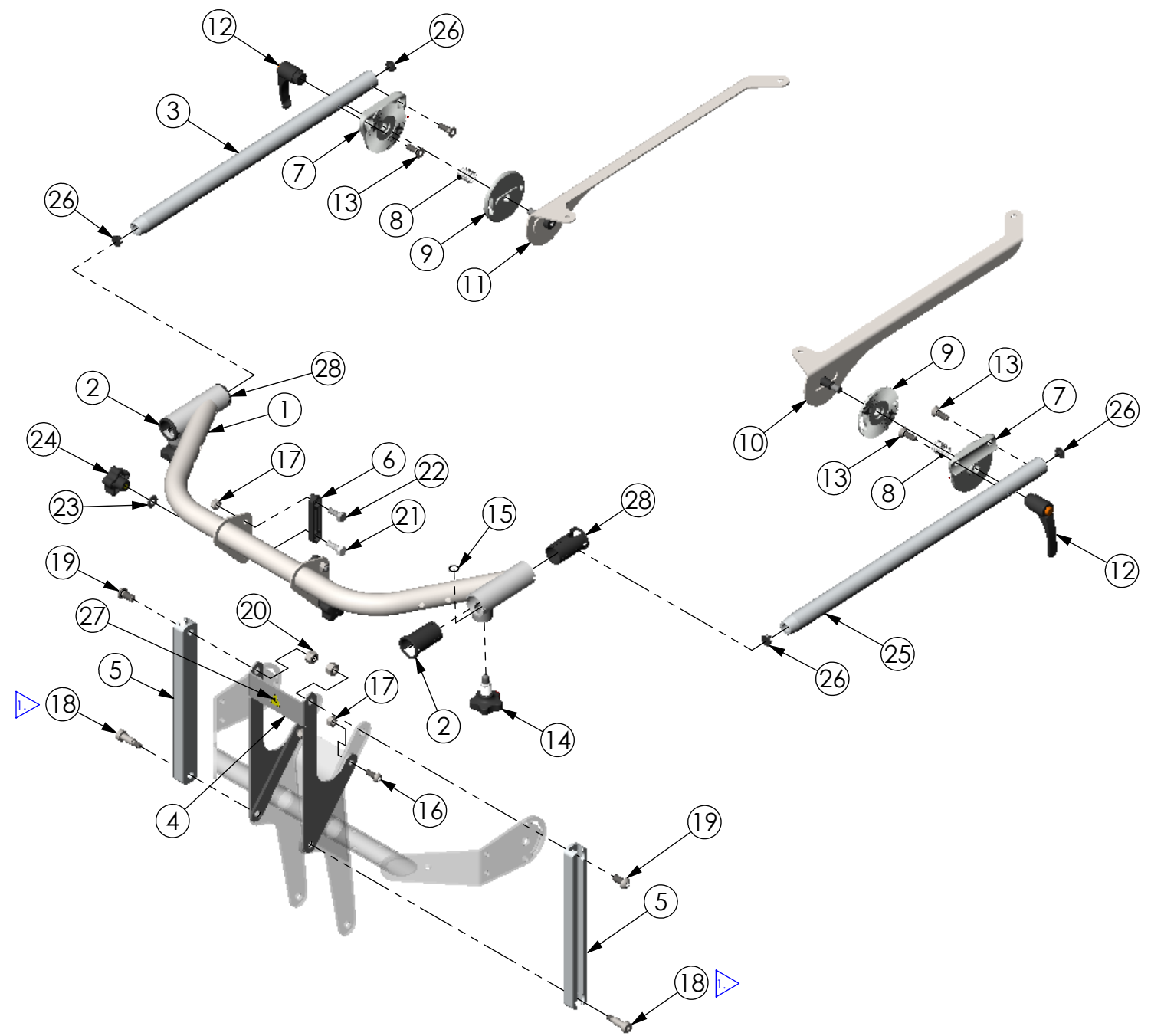


THE INFORMATION CONTAINED IN THIS DRAWING IS THE SOLE PROPERTY OF
 ALTIMATE MEDICAL. ANY REPRODUCTION IN PART OR WHOLE WITHOUT
 THE WRITTEN PERMISSION OF ALTIMATE MEDICAL IS PROHIBITED.

REVISIONS				
REV:	DESCRIPTION:	ECO #:	DATE:	APPROVED:
000	NEW RELEASE.	DCR-01002	11/19/12	MWL



ITEM NO.	PART NO.	REV	QTY.	NAME
1	Y1015	000	1	TABLE ADJUSTMENT BRACKET
2	Y2023	000	2	BUSHING TABLE TUBE
3	Y1017	000	1	TABLE TUBE LH
4	Y1071	000	1	BRACKET TABLE MOUNT
5	Y1016	000	2	RAIL TABLE ADJUSTMENT VERTICAL
6	Y2038	000	2	SLIDER BUSHING
7	600494	000	2	MOUNT TOOTHED
8	600174	000	2	FOOT REST SPRING
9	NG10179	B	2	CLAMP TOOTHED
10	Y1018	000	1	BRACKET TABLE ANGLE RH
11	Y1019	000	1	BRACKET TABLE ANGLE LH
12	600440	000	2	KNOB LEVER FEMALE M10 X 1.5
13	600211		4	BOLT FLT SHCS M8 X 1.25 - 25
14	600524	000	2	TOGGLE LOCK KNOB
15	600525	000	2	RETAINING RING 14mm
16	600053		2	BOLT BTN SHCS M8 X 1.25 - 20
17	600009		4	NUT NYLOCK M8 X 1.25
18	600461		2	BOLT M10 X 20 SHOULDER
19	600116		2	BOLT BTN SHCS M10 X 1.5 - 20
20	600010		2	NUT NYLOCK M10 X 1.5
21	600364	000	2	BOLT HEX M8 X 1.25 - 25
22	600433	000	2	BOLT HEX M8 X 1.25 - 22
23	600160	000	2	WASHER 1/4" USS ZINC
24	600132	000	2	KNOB FEMALE 5 POINT M8 X 1.25
25	Y1106	000	1	TABLE TUBE RH
26	600578	000	4	CAP END 1/2" ID
27	Y4001	000	1	LABEL HAND CRUSH
28	T20014	000	2	BUSHING TABLE

NOTE:
 1. REPLACES M10 X 12 SHOULDER BOLT 600549 (QTY. 2) FROM ASSEMBLY Y5528.

IF BOX CONTAINS AN "X", SEE NOTES THAT APPLY TO EACH SUBJECT.		APPROVED:	DATE:	UNLESS OTHERWISE SPECIFIED DIMENSIONS ARE IN INCHES. TOLERANCES AND SPECS. ARE: DECIMALS .X ± .1 ANGLES .X ± .5° .XX ± .03 .XXX ± .015 HOLE SIZE TOLERANCE: (+.005/- .000) BREAK EDGES .005 - .015 CMFR DRILLED HOLES .03 X 45°	ALTIMATE MEDICAL, INC. PO BOX 180 - 262 WEST FIRST STREET - MORTON, MN 56270 PHONE (507) 697-6393 FAX (507) 697-6900 DESCRIPTION: ASMBLY TABLE MULTI-ADJUSTABLE SIZE DWG. NO. Y5602 REV. 000 SCALE = 1:8 CAD FILE NAME: Y5602 SHEET 1 OF 1
<input type="checkbox"/> SEE SHIPPING INSTRUCTIONS	<input type="checkbox"/> RECEIVING INSPECTION	DRAWN: MWL	DATE: 5/29/12		
<input type="checkbox"/> SEE ENVIRONMENTAL INSTRUCTIONS		MATERIAL:	FINISH:		
		EXPIRATION DATE:	CODE: ASMBLY		