

EasyStand[®] Glider[®]

PNG50187 Medium and PNG50024 Large

Assembly Manual

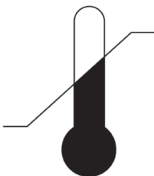


Please ensure the Assembly Manual stays with the unit at all times.

SYMBOL/LABEL LEGEND



CAUTION/WARNING/ATTENTION



TEMPERATURE



TYPE BF APPLIED PART



DATE OF MANUFACTURE



PINCHPOINT



SEE INSTRUCTIONS FOR USE



HUMIDITY



ATMOSPHERIC PRESSURE

SN

SERIAL NUMBER



MANUFACTURER

CE

CONFORMITÉ EUROPÉENNE

R_xonly

PRESCRIPTION ONLY

MD

MEDICAL DEVICE



POTENTIALLY HOT SURFACE

Accessible surfaces which may exceed 105°F/41°C and could be a hazard to persons with skin damage or not having sensation.



Waste of electrical and electronic equipment must not be disposed as unsorted municipal waste. It must be collected separately, and must be disposed as per local regulations. Contact your authorized representative for information concerning the decommissioning of your equipment.

CERTIFICATION LABEL/UNIQUE DEVICE IDENTIFICATION LABEL

Serial Number

SN 0000000000

Unique Identifier


00000000000000000000


Item Number
Item Description


Model:
Height Range:
Max. Weight Limit:

Approx. Max. Mass of Unit
& Weight Limit: 0000

Manufacturer:
Altimate Medical, Inc
262 West First Street
Morton, MN 56270
507-697-6393

CE **MD**  **2021**






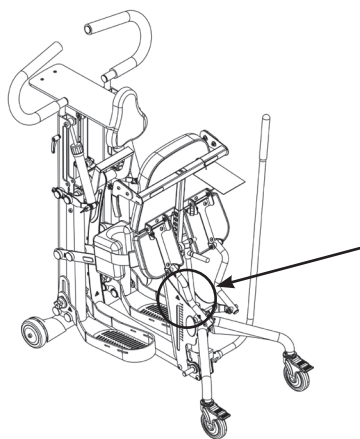


Table of Contents

Assembly 1

Options & Parts Detail 8



Note: The serial number is located under the seat on the seat column.

DRAFT

Date Purchased _____ Serial # _____

Contact Altimate Medical for any information required prior to purchase. This owner’s manual along with other information is freely available by request or by downloading from easystand.com.

EasyStand® Glider® Assembly

Videos on EasyStand assembly & fitting can be viewed at easystand.com/videos

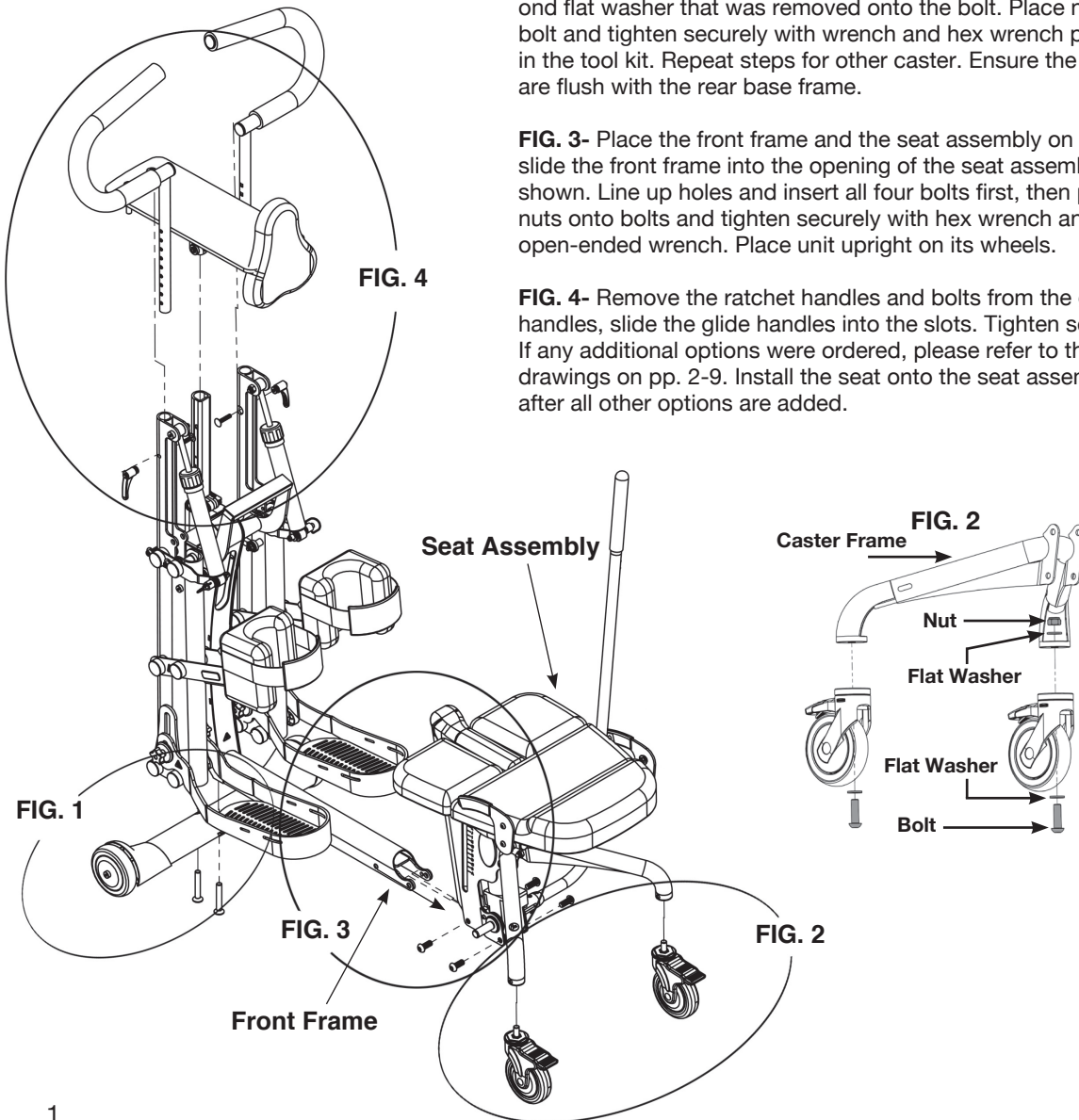
USE FIG. 1 - FIG. 3 FOR INTERNATIONAL ORDERS ONLY.

FIG. 1- Attach the front caster frame to the front frame with bolts and tighten securely. Laying your unit on the floor side ways may help with lining up the holes.

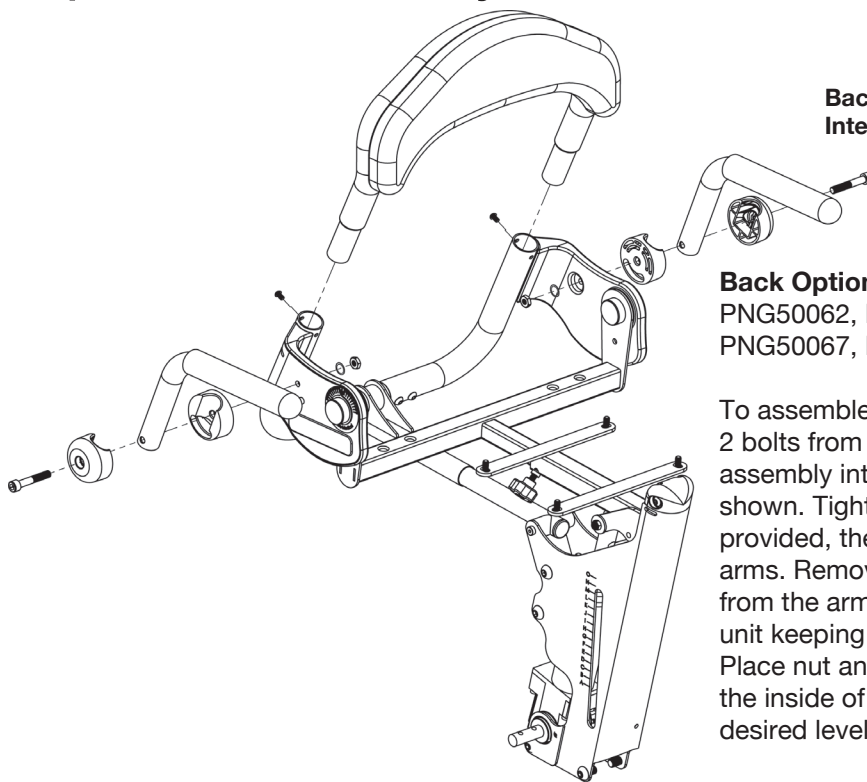
FIG. 2- Remove nut and flat washer from the bolt on the caster. A flat washer will remain on the bolt on the caster. Place caster, bolt, and flat washer into rear caster frame as shown. Place second flat washer that was removed onto the bolt. Place nut onto bolt and tighten securely with wrench and hex wrench provided in the tool kit. Repeat steps for other caster. Ensure the casters are flush with the rear base frame.

FIG. 3- Place the front frame and the seat assembly on its side, slide the front frame into the opening of the seat assembly as shown. Line up holes and insert all four bolts first, then place nuts onto bolts and tighten securely with hex wrench and 19mm open-ended wrench. Place unit upright on its wheels.

FIG. 4- Remove the ratchet handles and bolts from the glide handles, slide the glide handles into the slots. Tighten securely. If any additional options were ordered, please refer to the drawings on pp. 2-9. Install the seat onto the seat assembly after all other options are added.



Option Assembly



Back Option assembly for International orders only.

Back Option

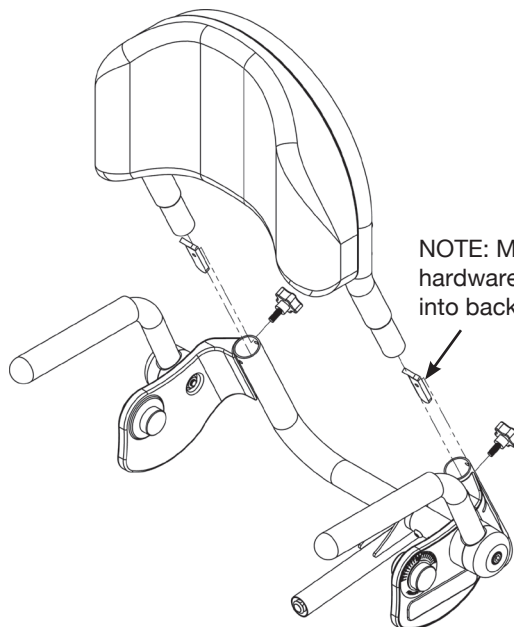
PNG50062, PNG50066,
PNG50067, PNG50068

To assemble the back option, remove the 2 bolts from the back, slide the back assembly into the seat assembly as shown. Tighten securely with bolts provided, then add the swing-away arms. Remove the nut and lock washer from the arm. Place the arm onto the unit keeping the arm assembly together. Place nut and lock washer onto bolt on the inside of the unit. Tighten securely to desired level of tension.

Removable Back Option

PNG50171, PNG50172,
PNG50173, PNG50174

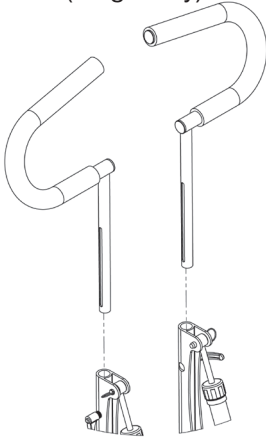
To attach the Removable Back to the unit, slide the back assembly into the seat assembly as shown. Insert hardware into back tubes with tabs facing upward and toward the back. Tighten securely with knobs provided.



NOTE: Make sure hardware is placed into back as shown.

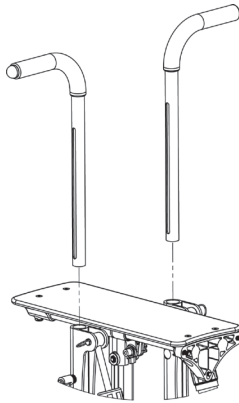
Glide Handles

Left Side-PNG10194
Right Side-PNG10196
(Large only)



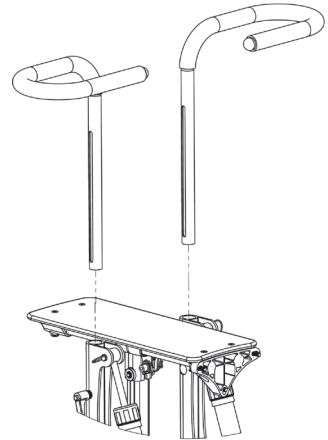
Glide Handles

PNG10177
(Medium only)



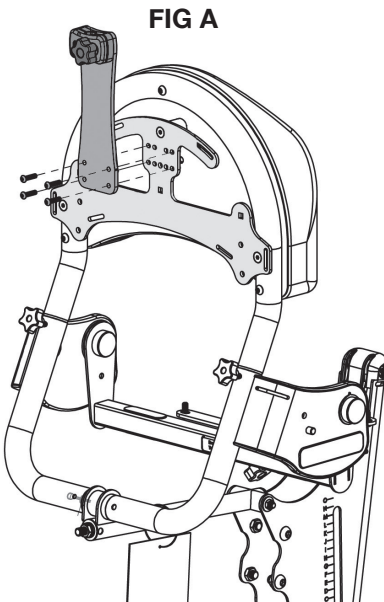
Glide Handle Extensions

PNG50251
(Medium only)



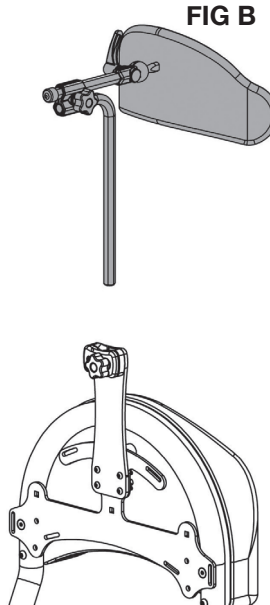
Head Support-Short

21"-30"H
PNG50240



Head Support-Tall

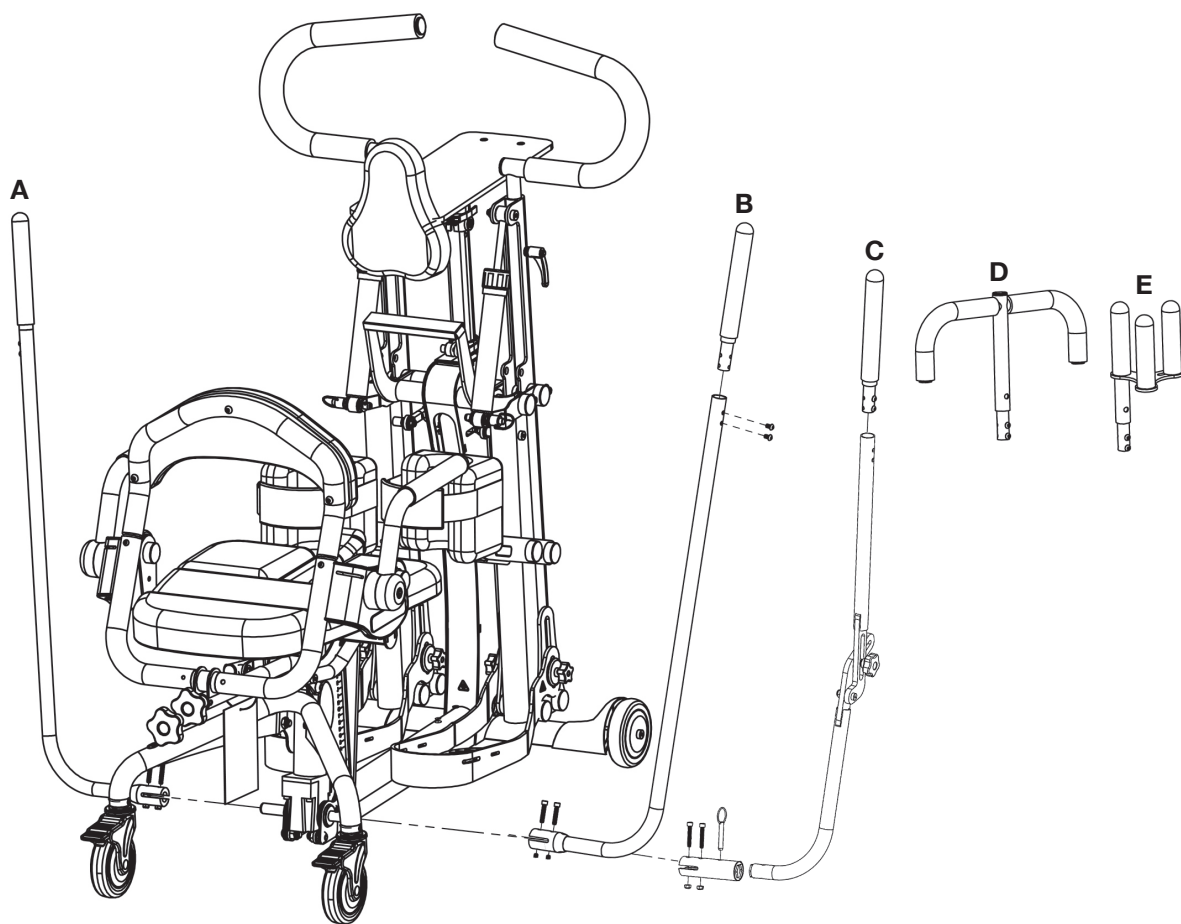
25"-34"H
PNG50037



If you ordered the high mount chest vest bracket see p. 6.

FIG A- Place head support bracket onto accessories mounting bracket as shown. Insert 4 bolts and nuts and tighten securely.

FIG B- Insert the head support onto the unit and tighten securely.



Remove the nuts and bolts from the pump handle. Insert the handle onto the pump. Line up holes and insert bolts, place nuts onto bolts. Tighten securely.

A
Standard
Actuator
Left Handle
 PNG50126

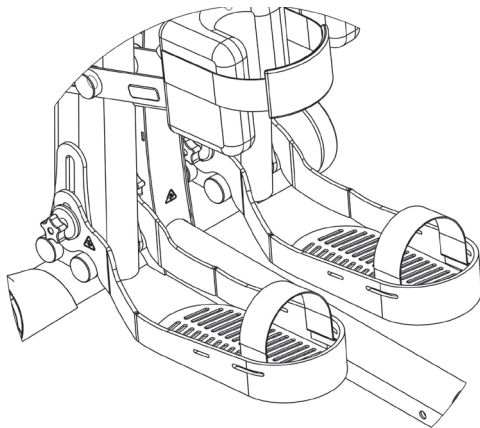
B
Standard
Actuator
Right Handle
 PNG50059

C
Adjustable/
Removable Handle
Universal Left/Right
 PNG50328

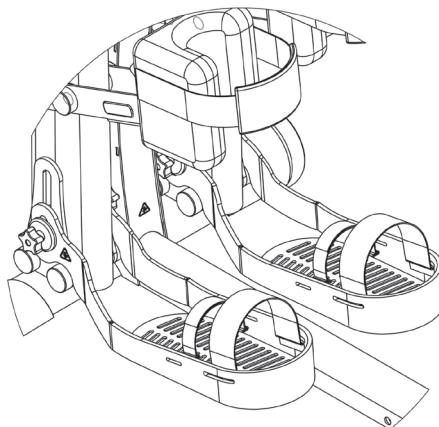
D
T-Style
Handle
Extension
 PNG50070

E
Quad Grip
Handle
Extension
 PNG50044

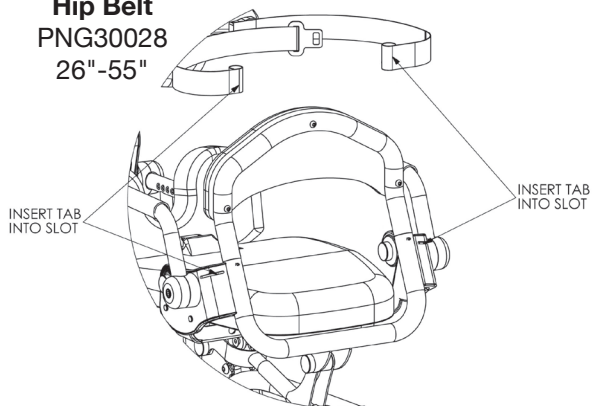
Foot Straps
 PNG30030-15"L
 PNG50505-21"L



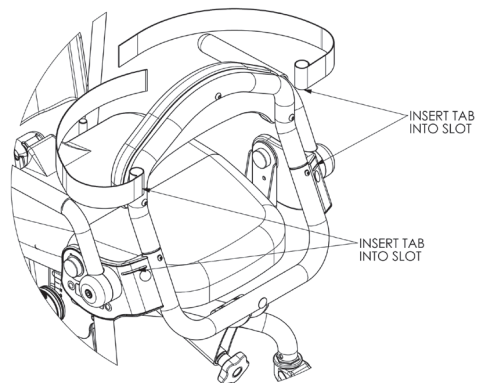
Secure Foot Straps
 PNG30031-15"L
 PNG50506-21"L



**Airline Buckle
 Hip Belt**
 PNG30028
 26"-55"



Velcro Hip Belt
 PNG30029-26"-55"
 PNG30306-38"-67"



Y-Style Chest Vest

PNG30171-17.5"Lx11.5"W
PNG30021-20.5"Lx12.5"W

Non-Stretch Y-Style Chest Vest

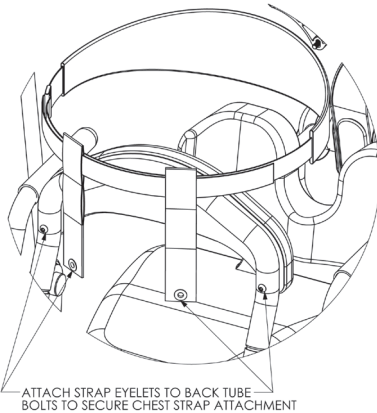
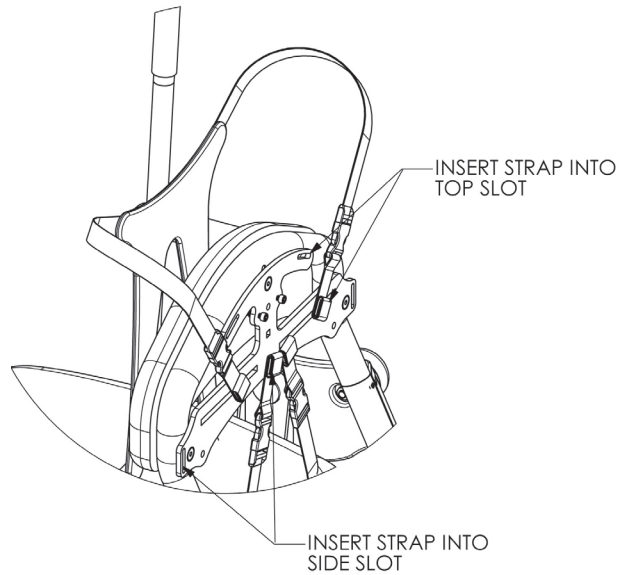
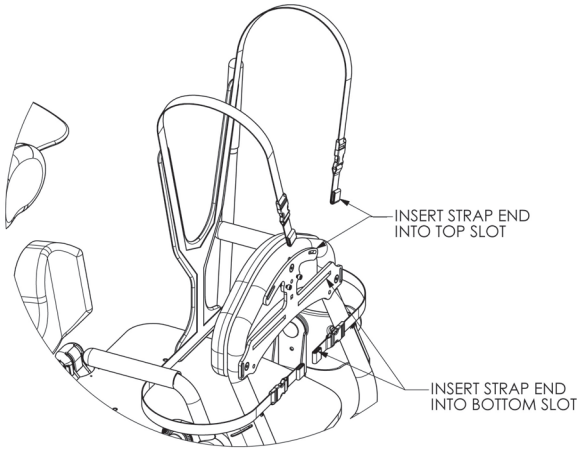
PNG30320-17.5"Lx11.5"W
PNG30324- 20.5"Lx12.5"W

X-Style Chest Vest

PNG30170-11"Lx9.5"W
PNG30056-14.5"Lx10.5"W

Non-Stretch X-Style Chest Vest

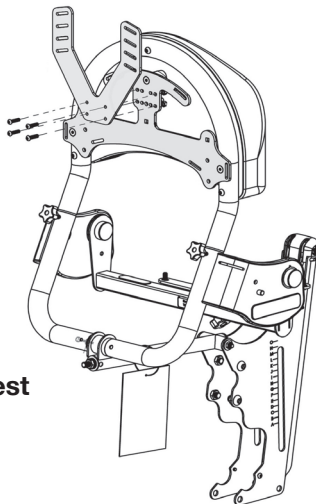
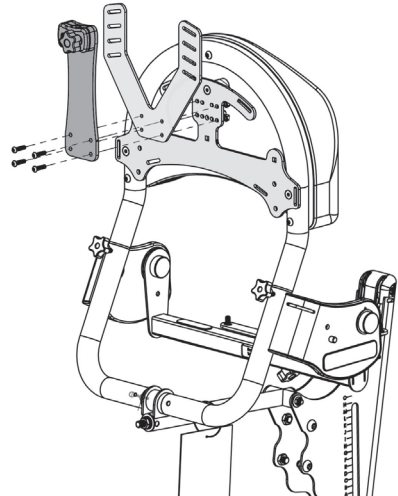
PNG30318- 11"Lx9.5"W
PNG30322-14.5"Lx10.5"W



Chest Strap

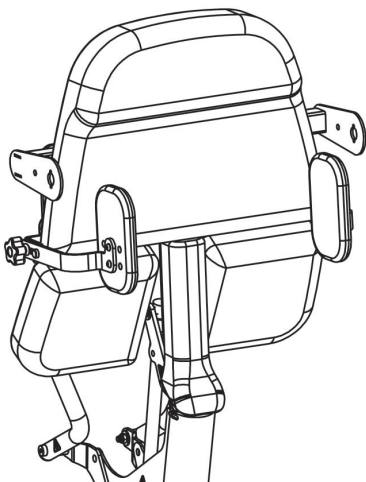
PNG50192-30"-46"
PNG50193-34"-54"
PNG50504-46"-66"

High Mount Chest Vest Bracket with Head Support Bracket



High Mount Chest Vest Bracket PNG11212

If you ordered the high mount chest vest bracket and head support, place the head support bracket and the high mount chest vest bracket on the unit as shown. Insert 4 bolts and nuts and tighten securely. See p. 3 for head support assembly.



Hip Supports

Glider Medium-PNG50345-9"-15" Range

PNG50374- 11"-17" Range

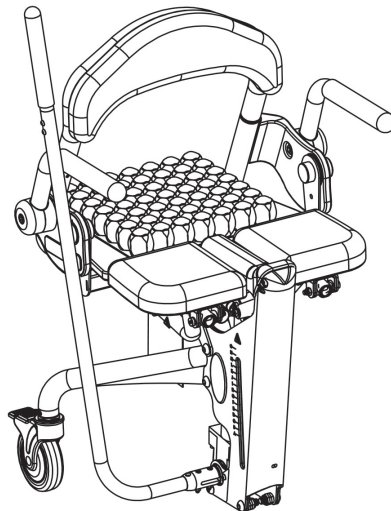
Glider Large-PNG50345-10"-15" Range

PNG50374- 12"-17" Range

Slide hip supports onto notch and knob under seat.
Tighten knob securely.

If adding hip supports off-unit, remove hole covers from top and bottom of the seat frame

Roho® Seat Glider Medium-PNG50351 Glider Large-PNG50353



Lateral Supports

with Flat Pads

8"-16.5"W

PNG50535

Lateral Supports

with Flat Pads

11"-19.5"W

PNG50536

Lateral Supports

with Curved Pads

8"-16.5"W

PNG50224

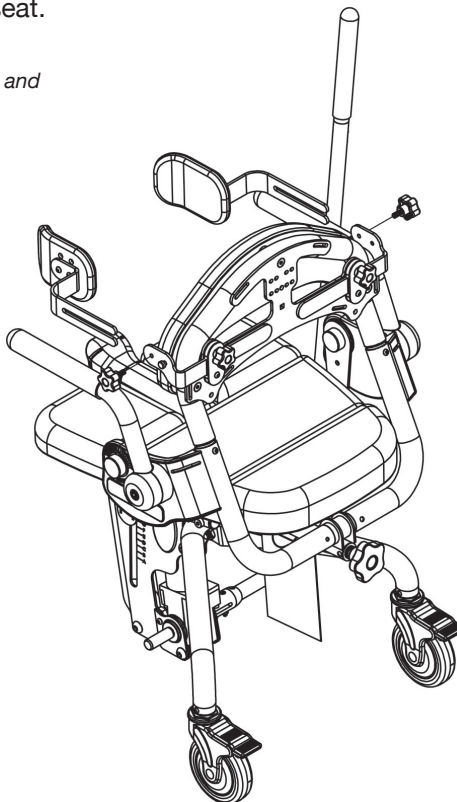
Lateral Supports

with Curved Pads

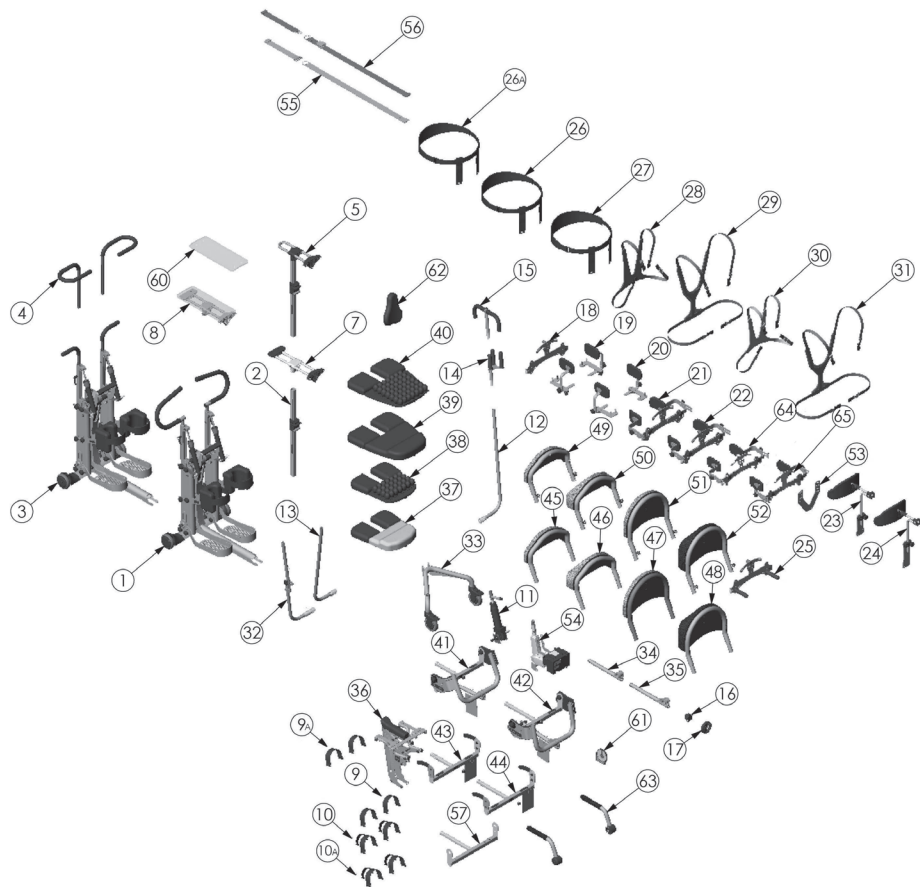
11"-19.5"W

PNG50176

Slide each lateral support onto notch and knob on the accessories mounting bracket. Tighten knobs securely.



Glider® Options & Parts Detail



| ITEM NO. | PART NO. | NAME | ITEM NO. | PART NO. | NAME |
|----------|----------|------------------------------------|----------|----------|-----------------------------------|
| 1 | NG50024 | NEW GENERATION GLIDER ASSEMBLY | 34 | NG50436 | ASMBLY FOLLOWING ARM YOUTH |
| 2 | NG50309 | TABLE POST ASSEMBLY | 35 | NG50437 | ASMBLY FOLLOWING ARM ADULT |
| 3 | NG50187 | NEW GENERATION YOUTH GLIDER | 36 | NG50378 | ASMBLY SEAT LIFT GLIDER |
| 4 | NG50251 | HANDLE ADJ U-SHAPE YOUTH | 37 | NG50350 | GLIDER SEAT ASMBLY YOUTH |
| 5 | NG50295 | ASMBLY NO-TABLE OPTION | 38 | NG50351 | GLIDER SEAT ASMBLY YOUTH ROHO |
| 6 | NG50331 | ASSEMBLY ADJUSTABLE PAD BRACKET | 39 | NG50352 | GLIDER SEAT ASMBLY ADULT |
| 7 | NG50341 | TABLE SLIDE ASSEMBLY | 40 | NG50353 | GLIDER SEAT ASMBLY ADULT ROHO |
| 8 | NG50370 | TABLE EVOLV GLIDER | 41 | NG50441 | ASMBLY BACK REST YOUTH |
| 9 | ng30030 | STRAPS FOOT OPTION | 42 | NG50442 | ASMBLY BACK REST ADULT |
| 9A | ng50505 | STRAPS FOOT OPTION | 43 | NG50444 | ASMBLY EVOLV NO BACK YOUTH |
| 10 | NG30031 | STRAPS SECURE FOOT OPTION | 44 | NG50445 | ASMBLY EVOLV NO BACK ADULT |
| 10A | NG50506 | STRAPS SECURE FOOT OPTION | 45 | NG50066 | BACK LOW FLAT |
| 11 | NG50009 | PUMP HYDRAULIC ASSEMBLY LARGE | 46 | NG50062 | BACK LOW W/CONTOUR (V908) |
| 12 | NG50059 | HANDLE PUMP STANDARD RT | 47 | NG50067 | BACK HIGH FLAT(V909) |
| 13 | NG50126 | HANDLE PUMP STANDARD LH | 48 | NG50068 | BACK HIGH W/CONTOUR (V910) |
| 14 | NG50044 | QUAD GRIP OPTION | 49 | NG50171 | BACK REMOVABLE LOW FLAT |
| 15 | NG50070 | ACTUATOR HANDLE EXTENSION EVOLV LG | 50 | NG50172 | BACK REMOVABLE LOW CONTOURED |
| 16 | NG20122 | KNOB FEMALE M12 X 1.75 | 51 | NG50173 | BACK REMOVABLE HIGH FLAT |
| 17 | 600002 | WHEEL 100mm W/FOLD AWAY HANDLE | 52 | NG50174 | BACK REMOVABLE HIGH CONTOURED |
| 18 | NG50034 | BRACKET ACCESSORY LG | 53 | NG11212 | HIGH MOUNT CHEST VEST BRACKET |
| 19 | NG50161 | HIP GUIDE ASSEMBLY MEDIUM | 54 | NG50010 | POW'R UP LIFT EVOLV |
| 20 | NG50198 | HIP GUIDE ASSEMBLY LARGE | 55 | NG30029 | STRAP SEAT BELT NG ADULT |
| 21 | NG50224 | LATERAL SUPPORTS 8"-16.5"W | 56 | NG30028 | STRAP SEAT BELT W/BUCKLE NG ADULT |
| 22 | NG50176 | LATERAL SUPPORTS 11"-19.5"W | 57 | NG50499 | ASSEMBLY BEARING SEAT DEPTH |
| 23 | NG50240 | HEAD REST ASSEMBLY MED | 60 | NG20019 | TABLE GLIDER |
| 24 | NG50037 | HEAD REST ASSEMBLY LG (V915) | 61 | 80246 | SEAT ANGLE LOCATOR |
| 25 | NG50040 | HANDLE PUSH ASSEMBLY | 62 | NG30002 | CHEST PAD NG GLIDER |
| 26A | NG50504 | STRAPCHEST RESTRAINT | 63 | NG50450 | ARM REST ASSEMBLY EVOLV |
| 26 | NG50192 | STRAP SMALL CHEST RESTRAINT (V904) | 64 | NG50535 | LATERAL SUPPORTS 8"-16.5"W FLAT |
| 27 | NG50193 | STRAP LARGE CHEST RESTRAINT (V901) | 65 | NG50536 | LATERAL SUPPORTS 11"-19.5"W FLAT |
| 28 | NG30056 | LARGE CHEST VEST EVOLV | | | |
| 29 | NG30021 | VEST CHEST Y SHAPE ASSEMBLY LARGE | | | |
| 30 | NG30170 | X-STYLE CHEST VEST MEDIUM | | | |
| 31 | NG30171 | Y-STYLE CHEST VEST MEDIUM | | | |
| 32 | NG50328 | HANDLE PUMP REMOVEABLE/ADJ | | | |
| 33 | NG50058 | SEAT REAR CASTER TUBE | | | |

AltimateMedical

Assembly Manual

262 West 1st St.
Morton, MN 56270 USA
Toll Free: 800.342.8968 or 507.697.6393
Fax Free: 877.342.8968 or 507.697.6900
email: info@easystand.com
easystand.com



Medical Product Service GmbH
Borngasse 20
35619 Braunfels
Deutschland



MPS Medical Product Service UK Ltd
Northgate House
Northgate Street
Devizes
Wiltshire England SN10 1JX



MPS Medical Product Service Switzerland, CO/Accumed Sagl
Morbio Inferiore
Viale Serfontana 10
CH-6834 Switzerland



Standing technology should only be used under the guidance of a physician with recommendations for standing program protocol and any medical precautions. Standing programs should be monitored by the attending therapist. AMI maintains a policy of continual product improvement and reserves the right to change features, specifications, and prices without prior notification. Check with AMI for latest info.
FORM GLIDASSEMBAN 012623 REV A Copyright © 2023 Altimate Medical, Inc. All rights reserved. Printed in the U.S.A.